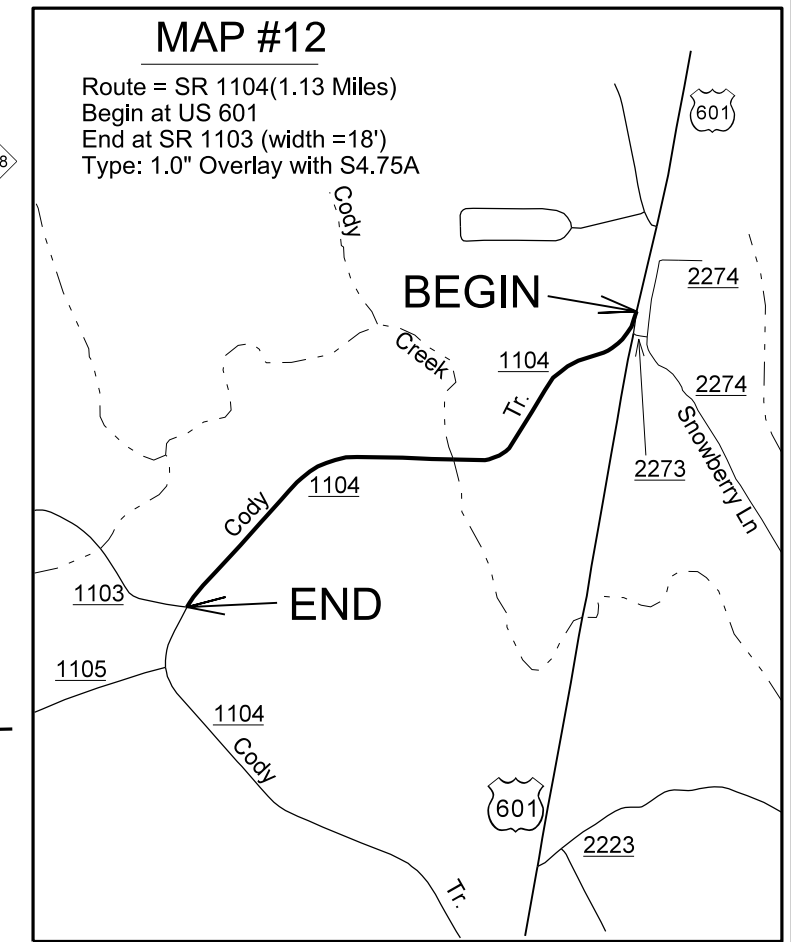
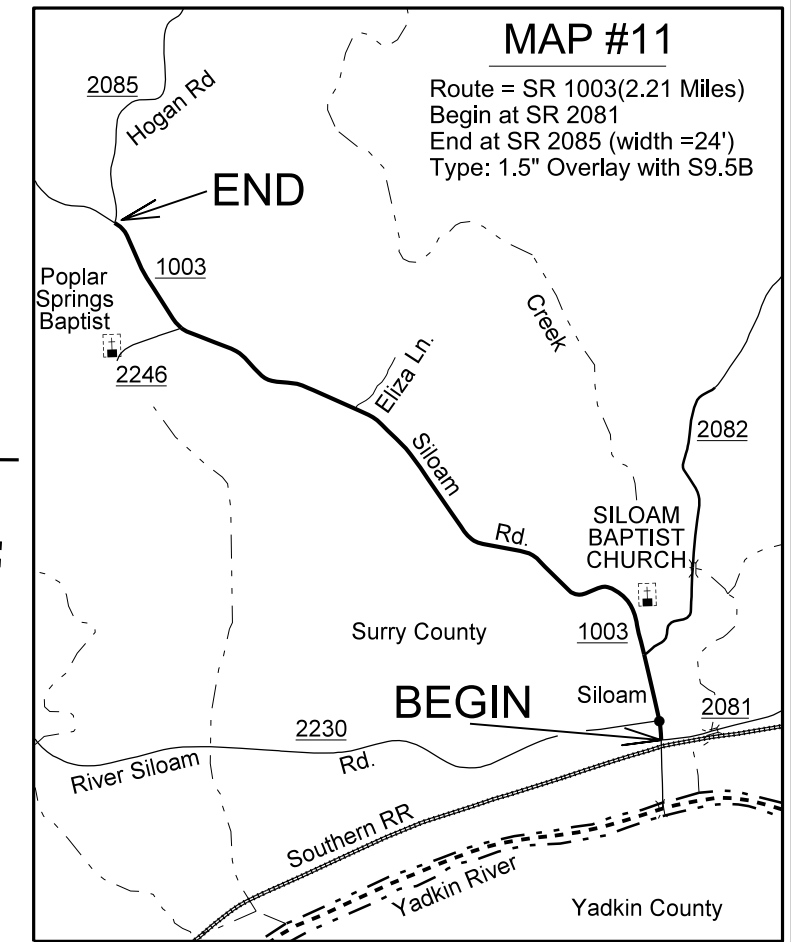
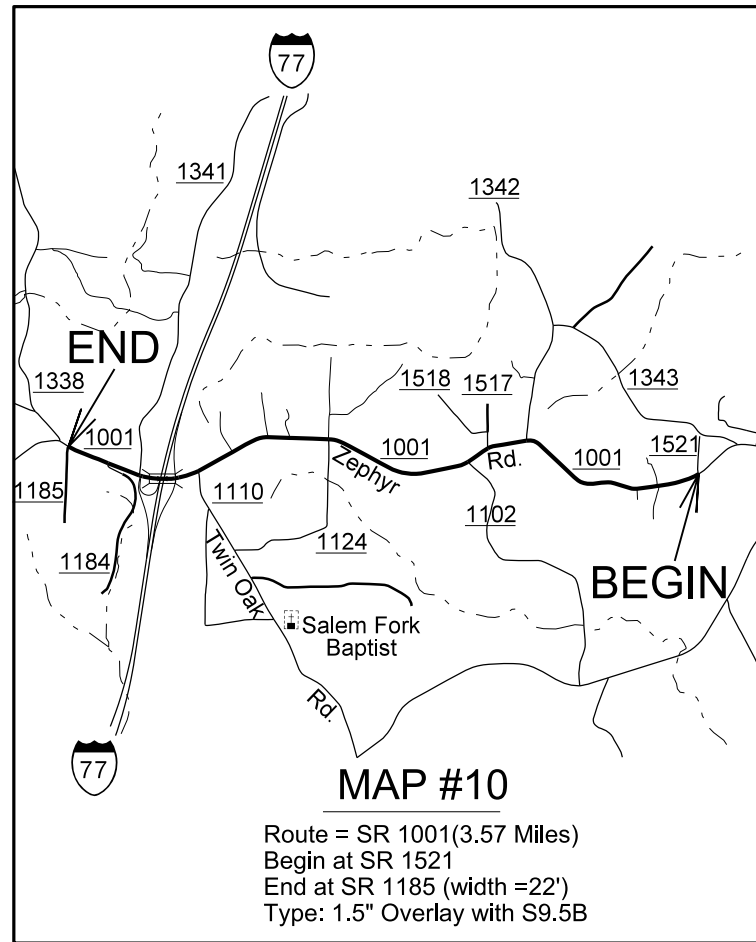
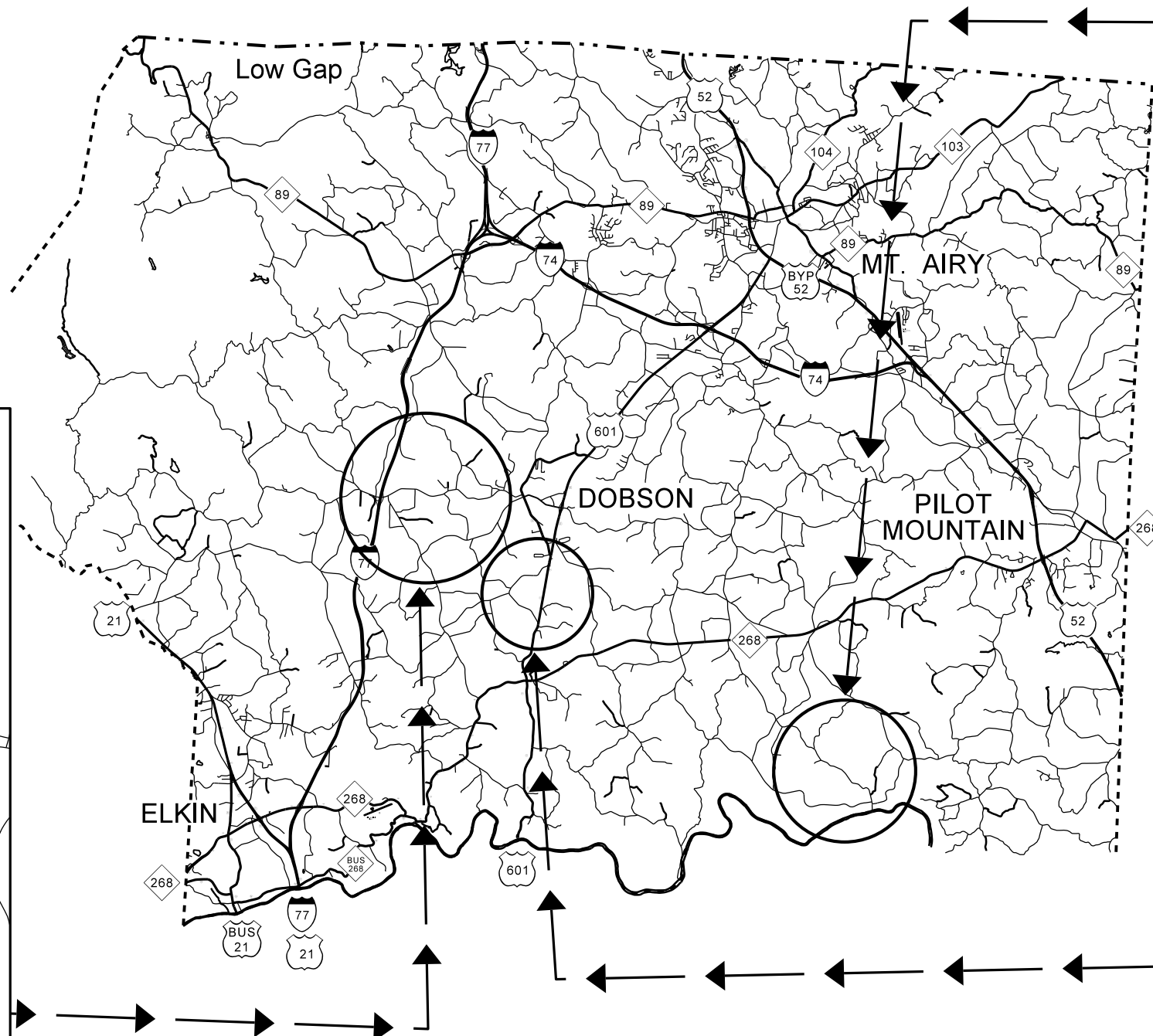


STATE OF NORTH CAROLINA  
DIVISION OF HIGHWAYS

**SURRY COUNTY**

2018

TYPE OF WORK: ASPHALT RESURFACING  
SECONDARY ROUTES

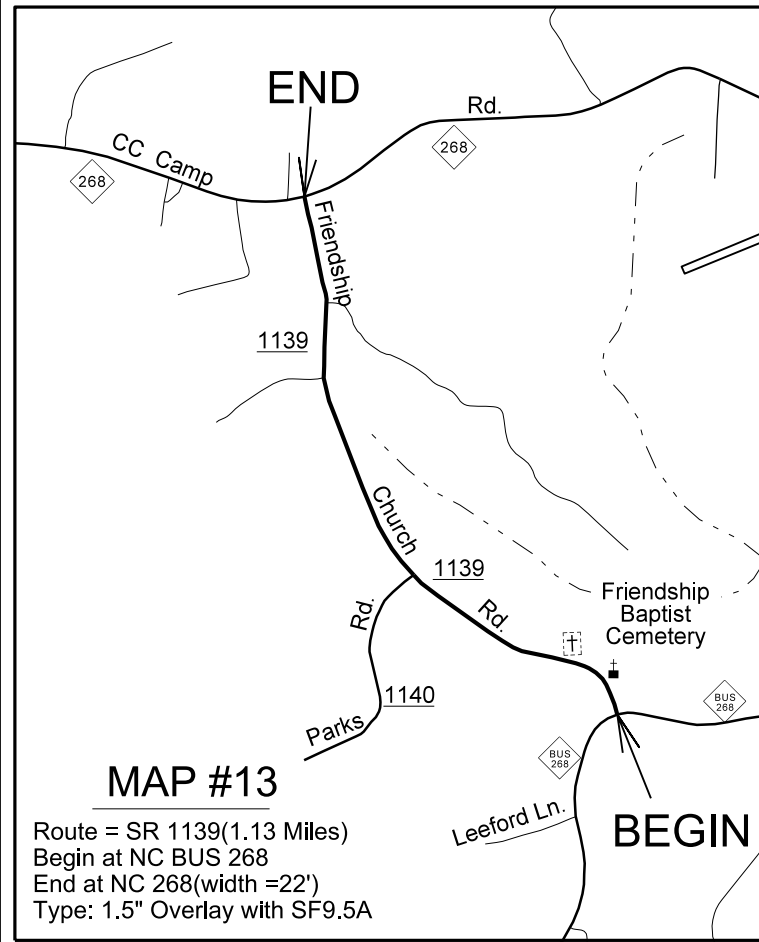
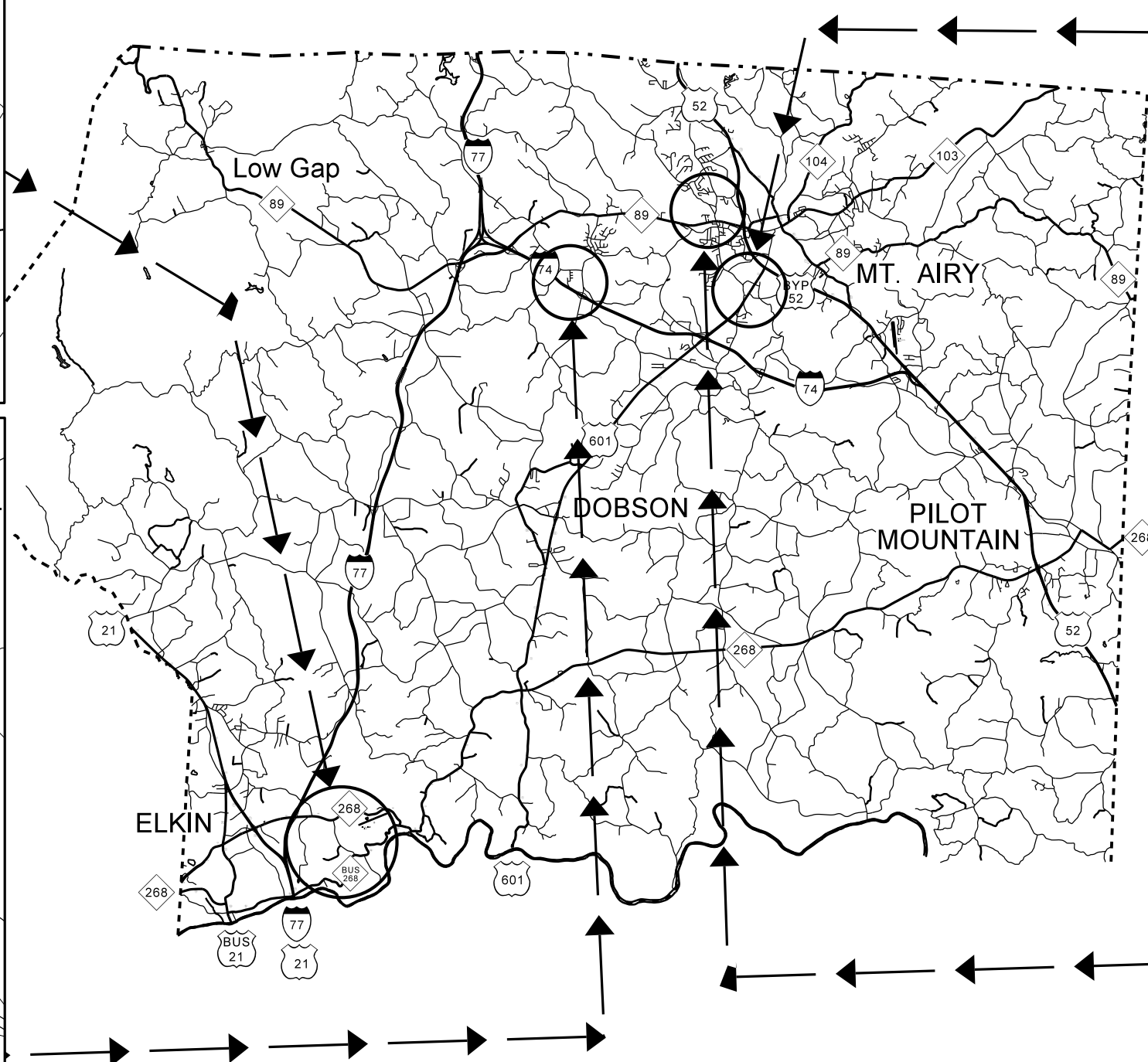


STATE OF NORTH CAROLINA  
DIVISION OF HIGHWAYS

**SURRY COUNTY**

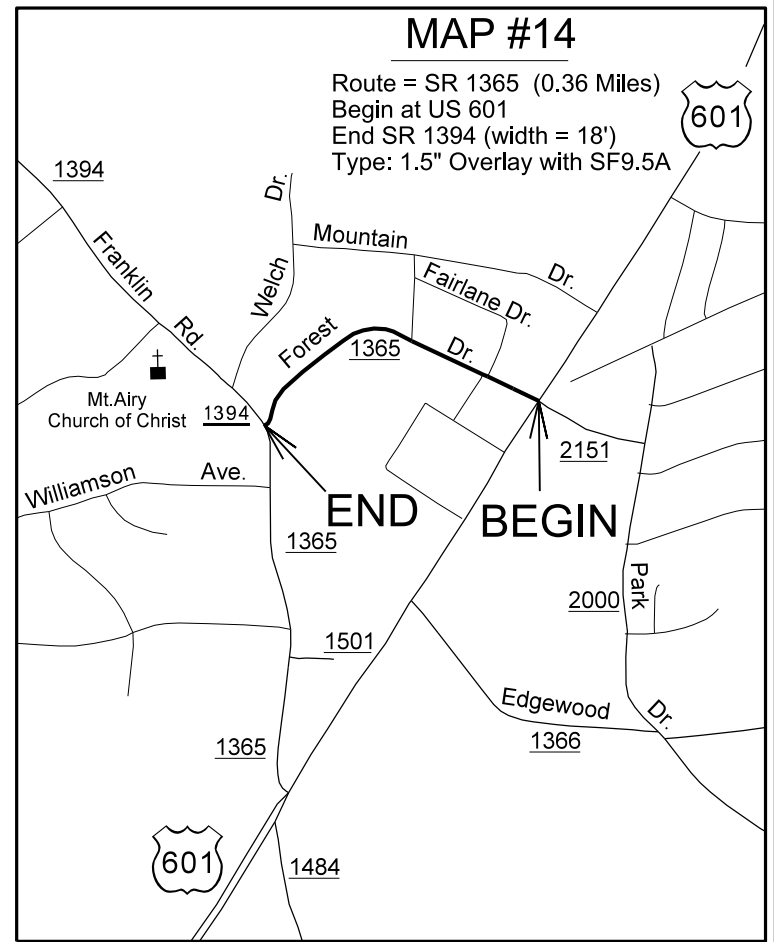
2018

TYPE OF WORK: ASPHALT RESURFACING  
SECONDARY ROUTES



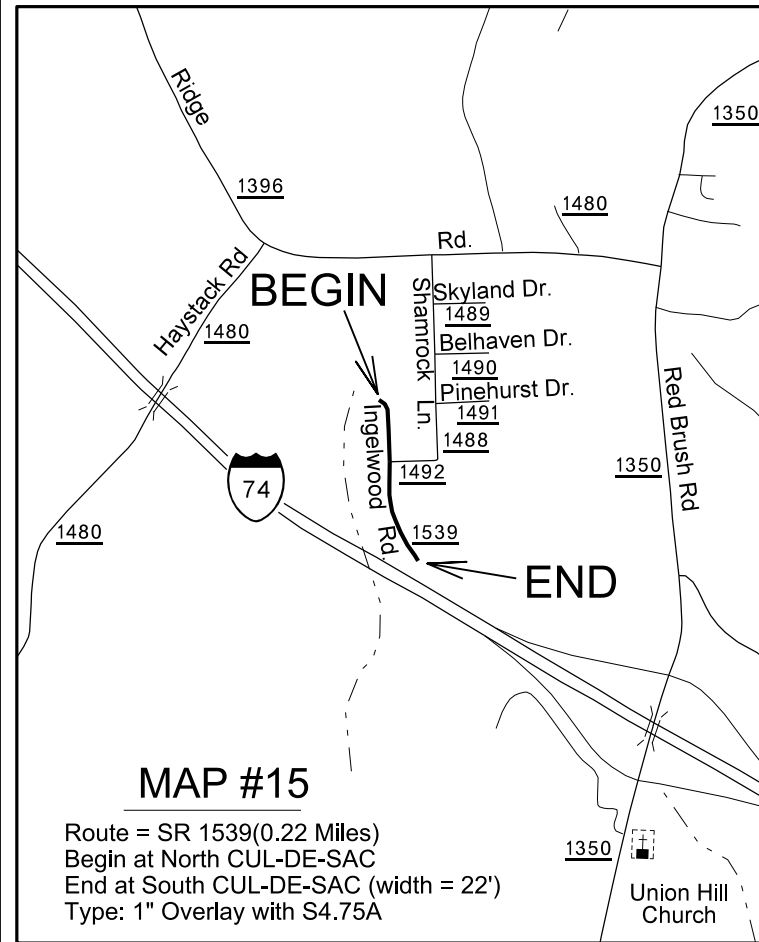
MAP #13

Route = SR 1139(1.13 Miles)  
Begin at NC BUS 268  
End at NC 268(width = 22')  
Type: 1.5" Overlay with SF9.5A



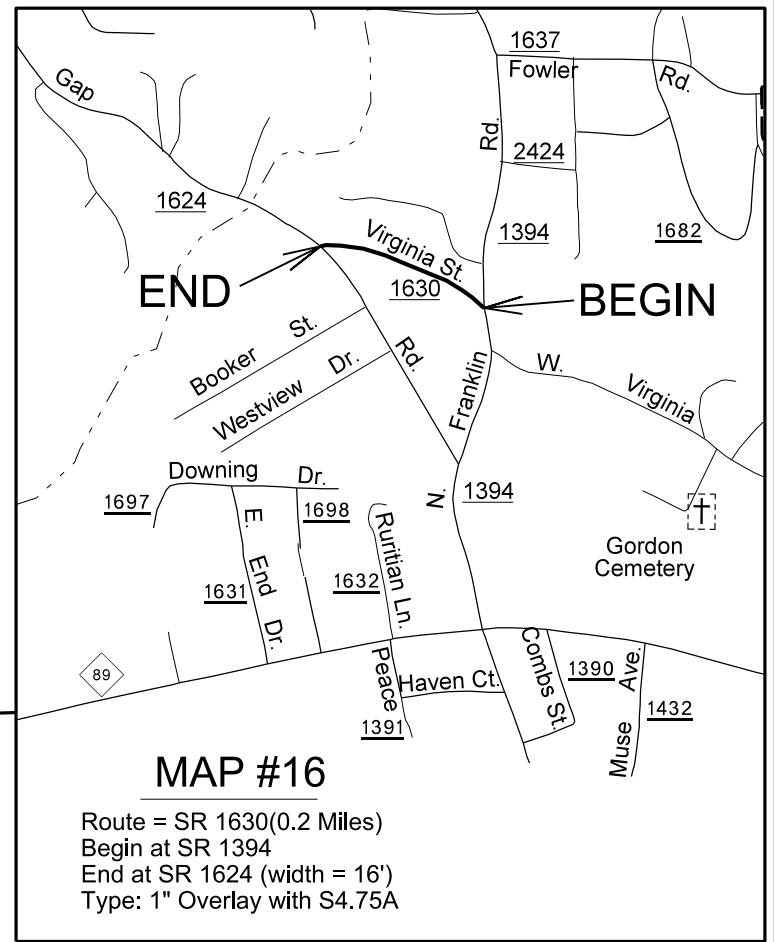
MAP #14

Route = SR 1365 (0.36 Miles)  
Begin at US 601  
End SR 1394 (width = 18')  
Type: 1.5" Overlay with SF9.5A



MAP #15

Route = SR 1539(0.22 Miles)  
Begin at North CUL-DE-SAC  
End at South CUL-DE-SAC (width = 22')  
Type: 1" Overlay with S4.75A



MAP #16

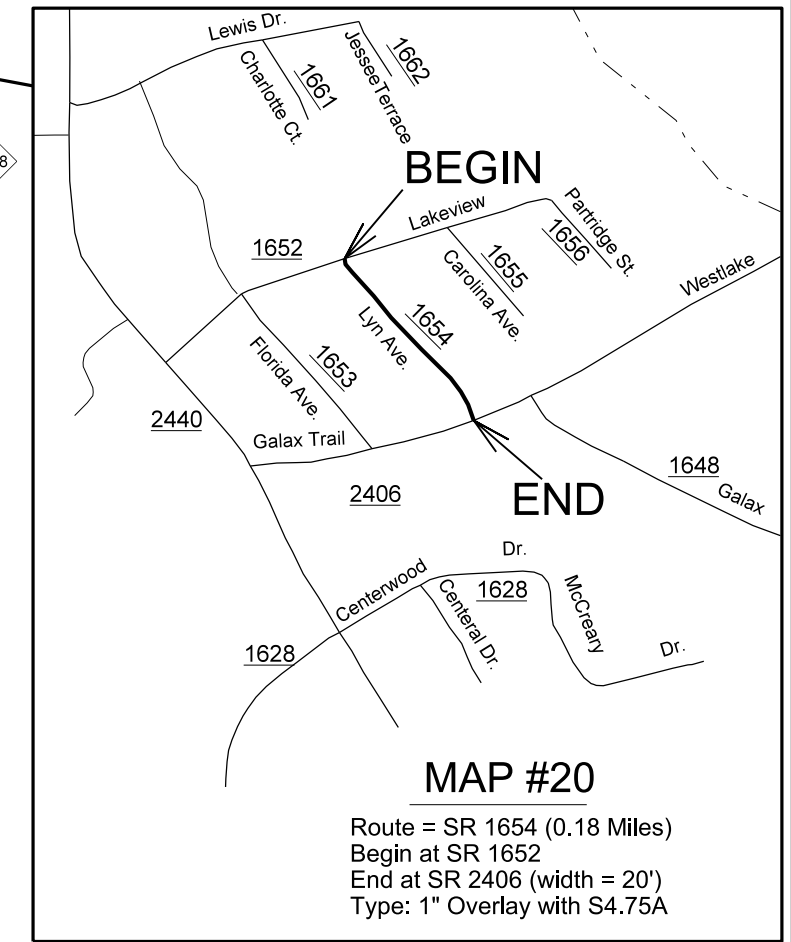
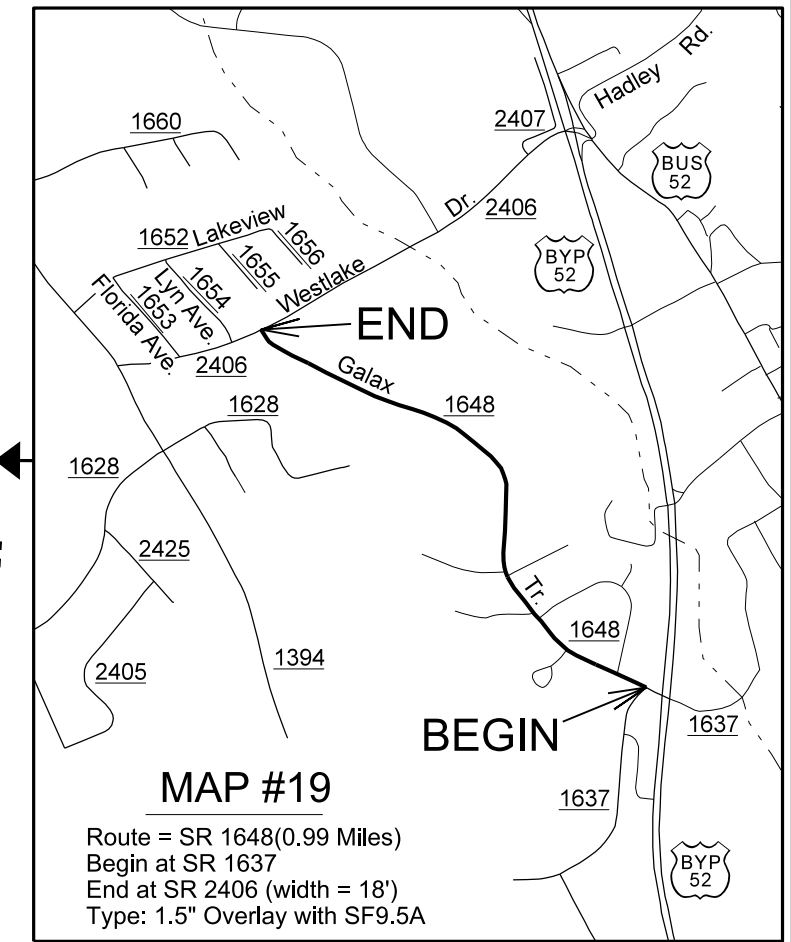
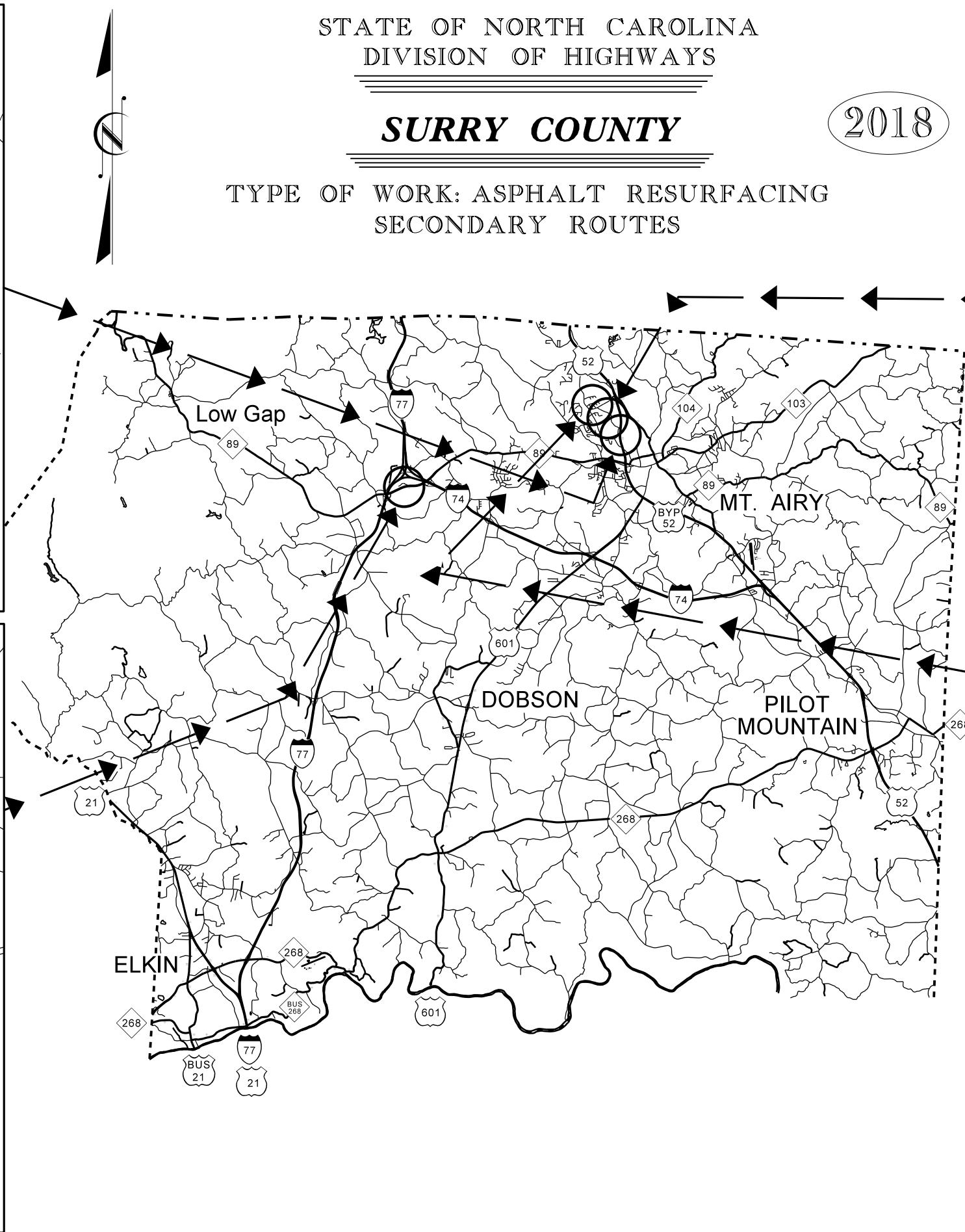
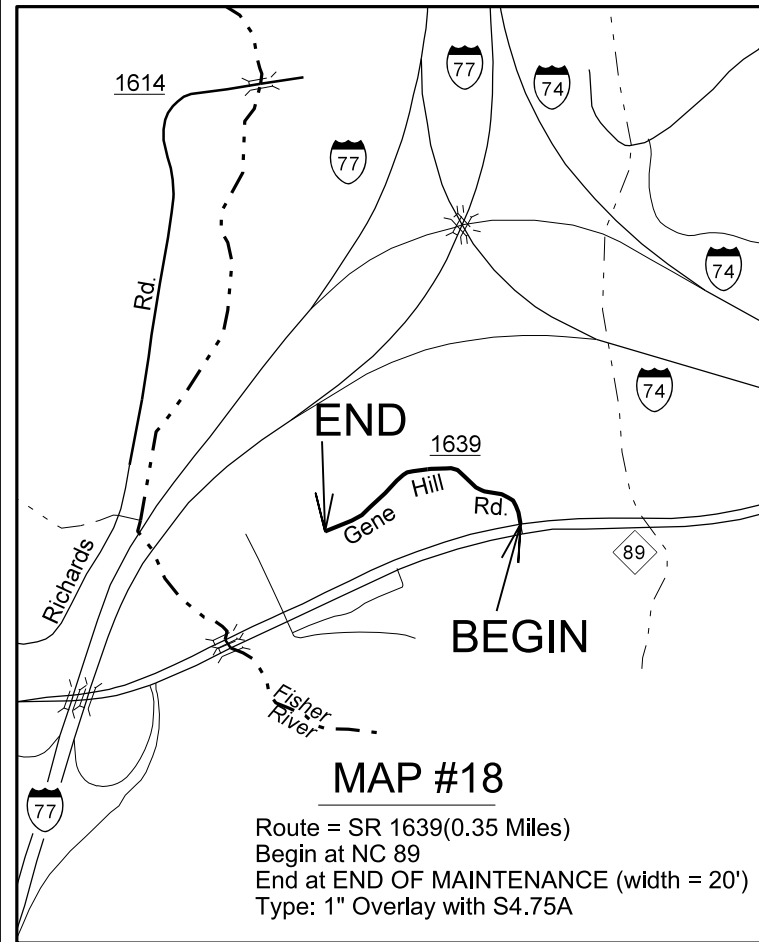
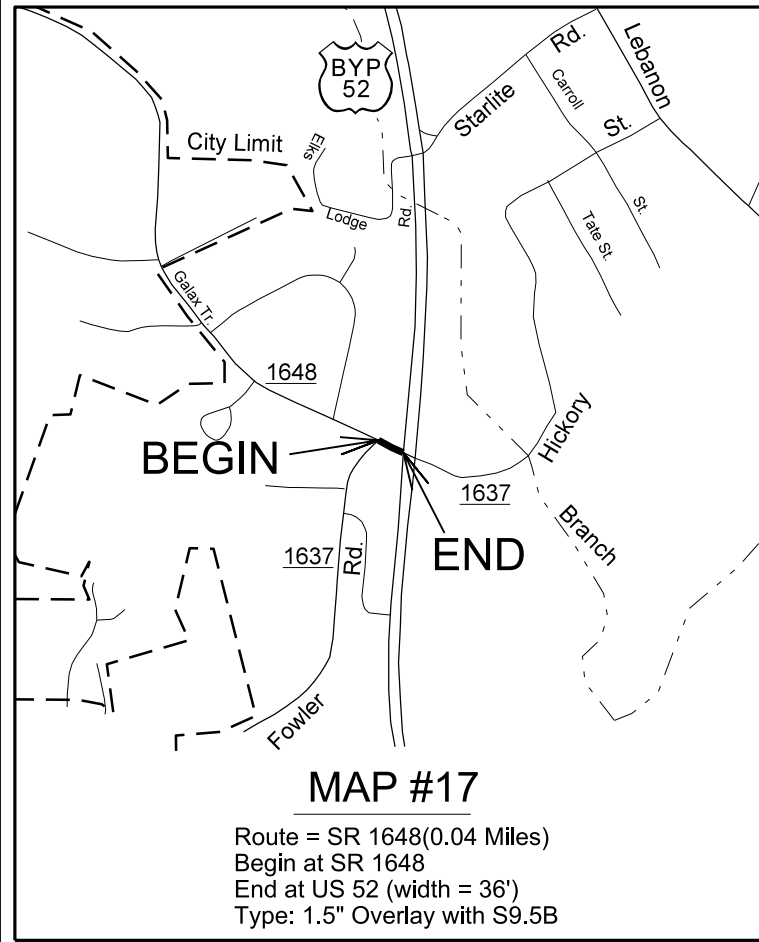
Route = SR 1630(0.2 Miles)  
Begin at SR 1394  
End at SR 1624 (width = 16')  
Type: 1" Overlay with S4.75A

STATE OF NORTH CAROLINA  
DIVISION OF HIGHWAYS

**SURRY COUNTY**

2018

TYPE OF WORK: ASPHALT RESURFACING  
SECONDARY ROUTES

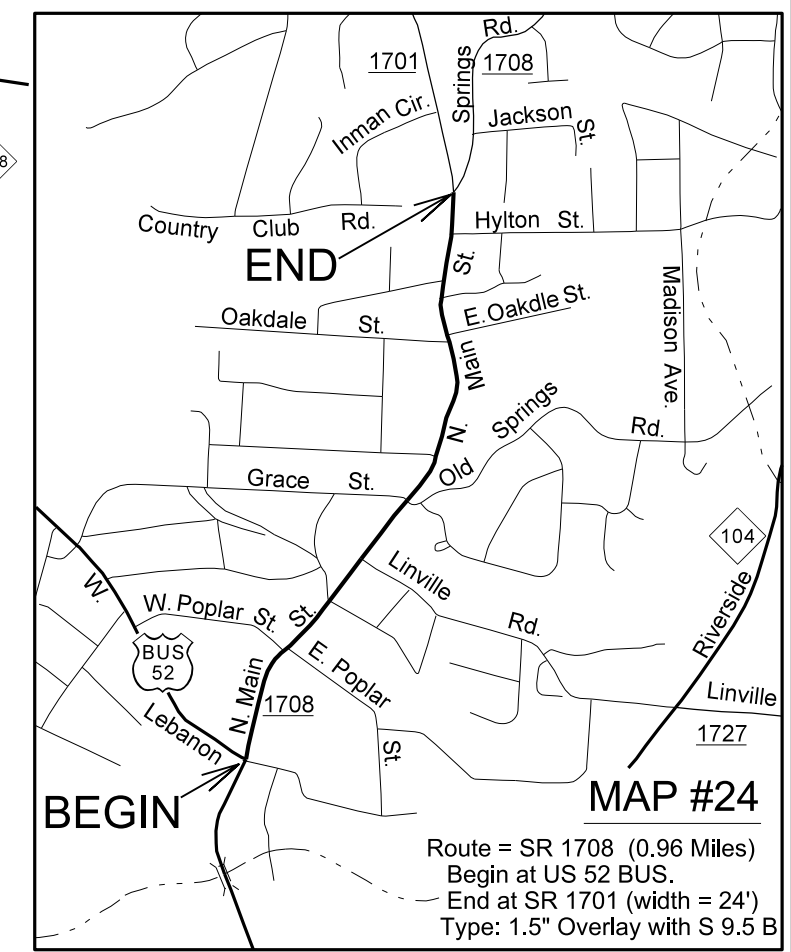
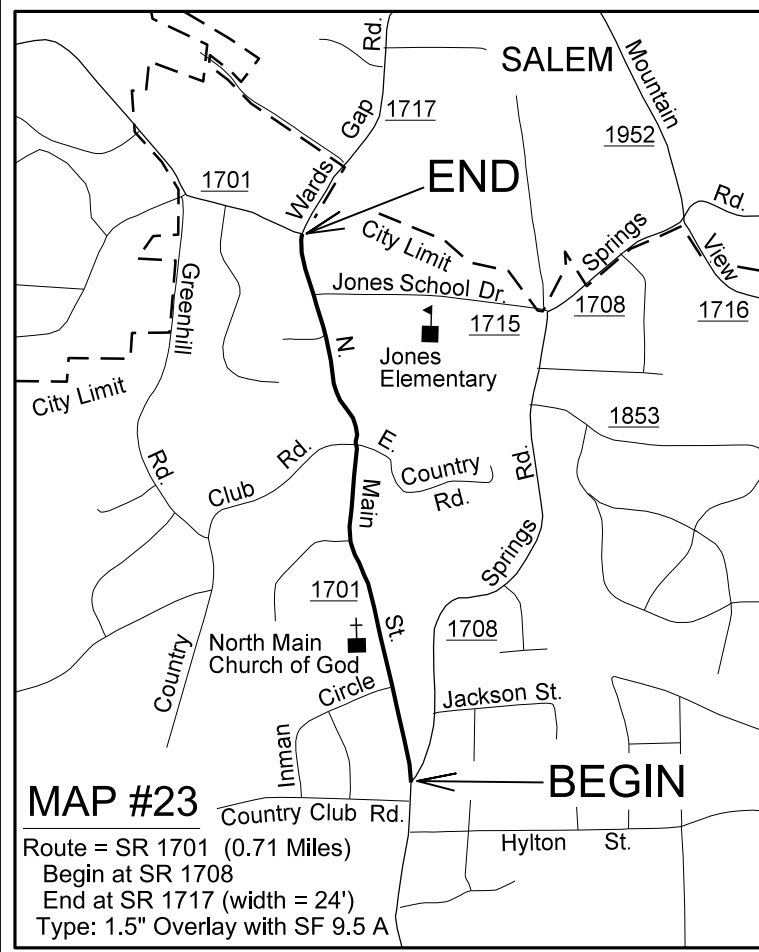
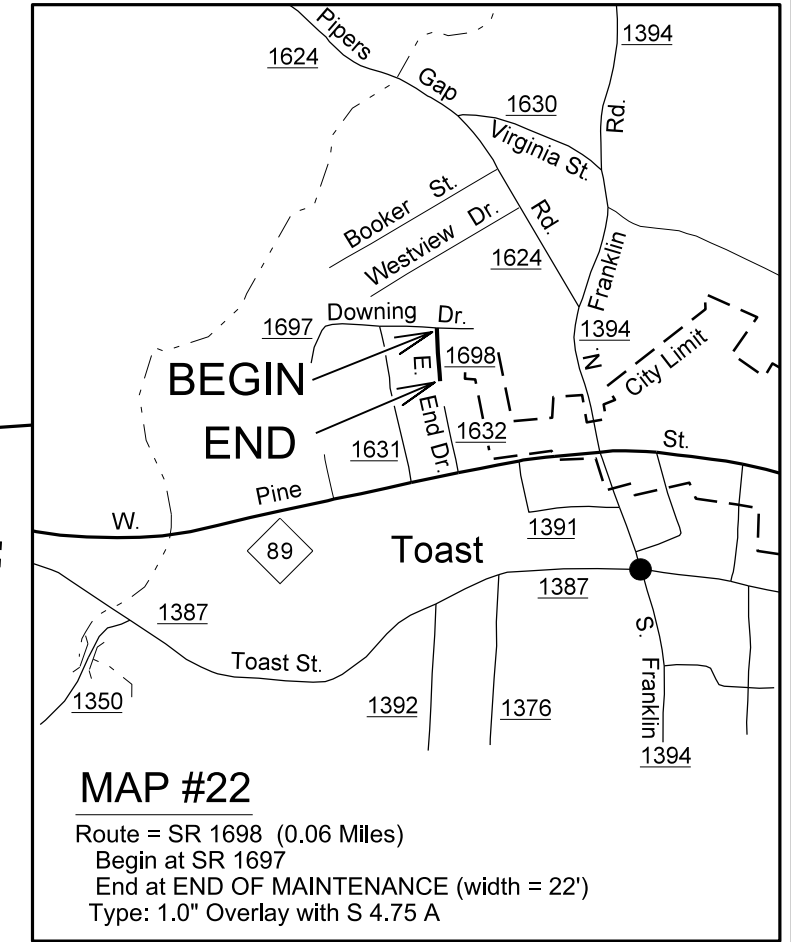
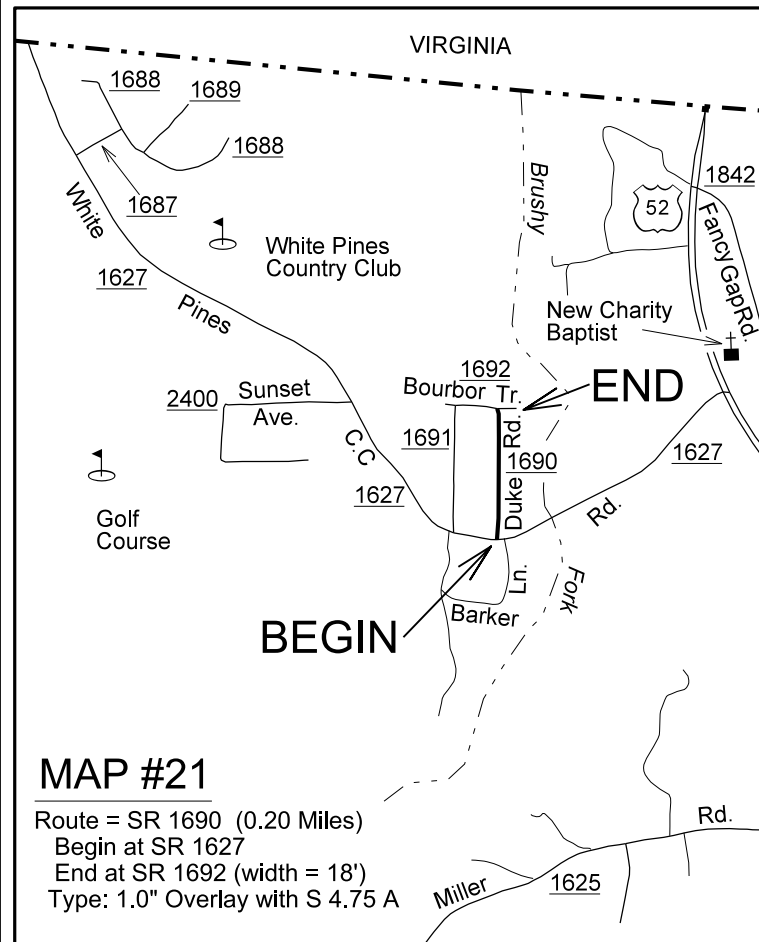
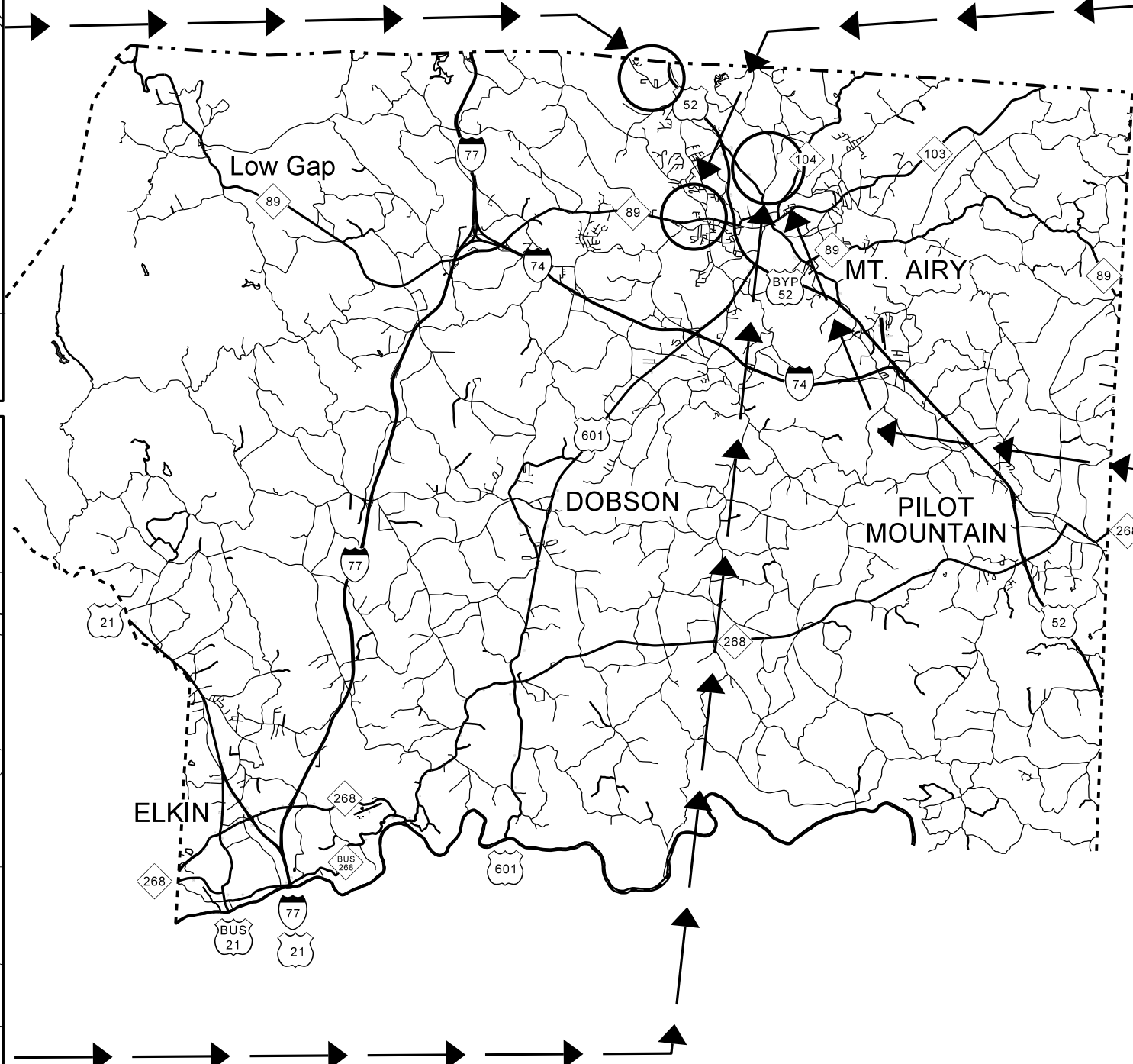


STATE OF NORTH CAROLINA  
DIVISION OF HIGHWAYS

**SURRY COUNTY**

2018

TYPE OF WORK: ASPHALT RESURFACING  
SECONDARY ROUTES

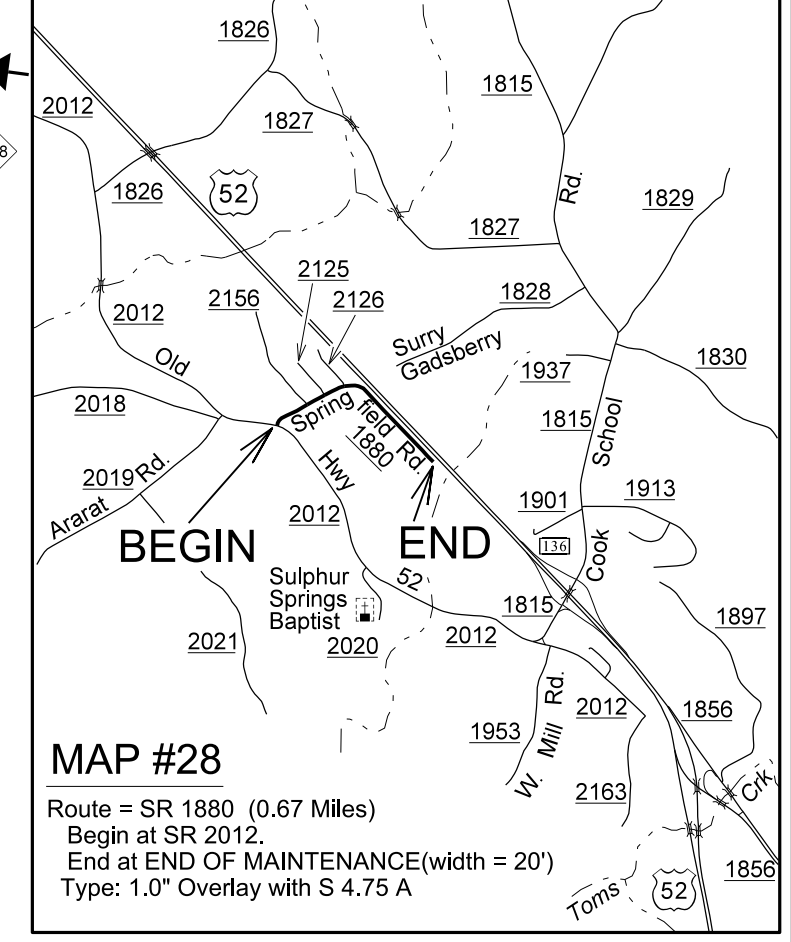
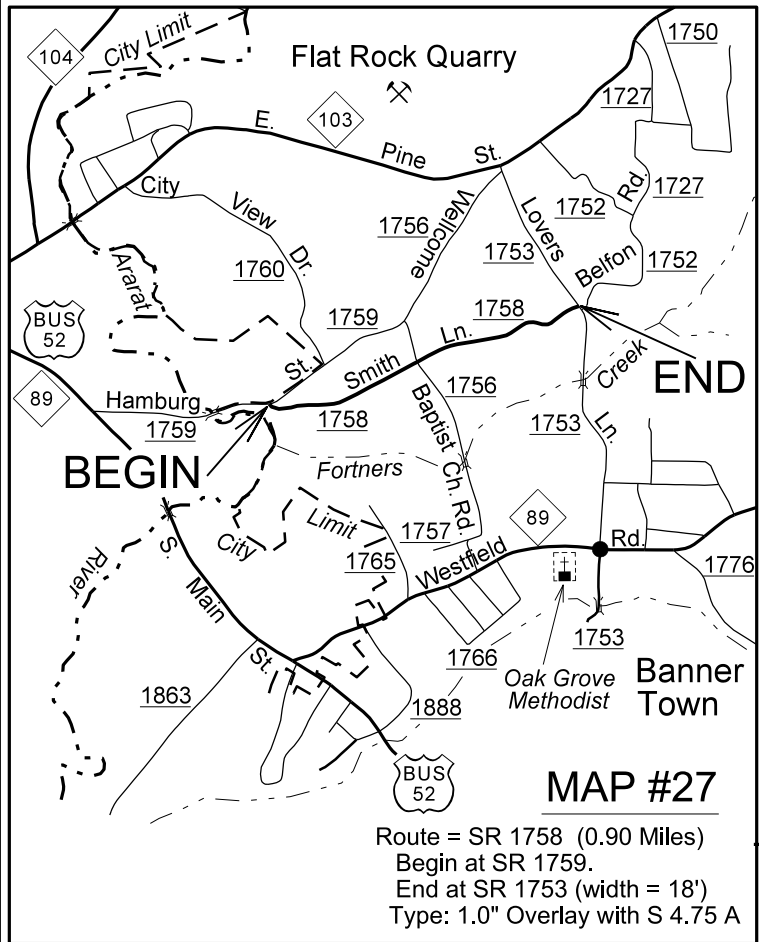
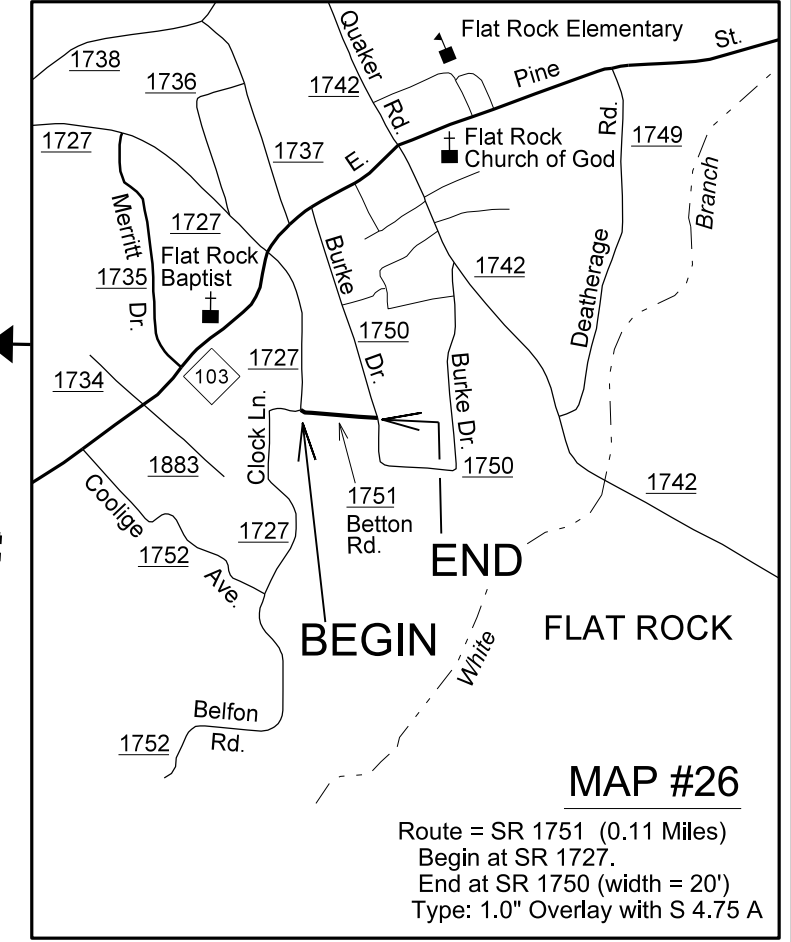
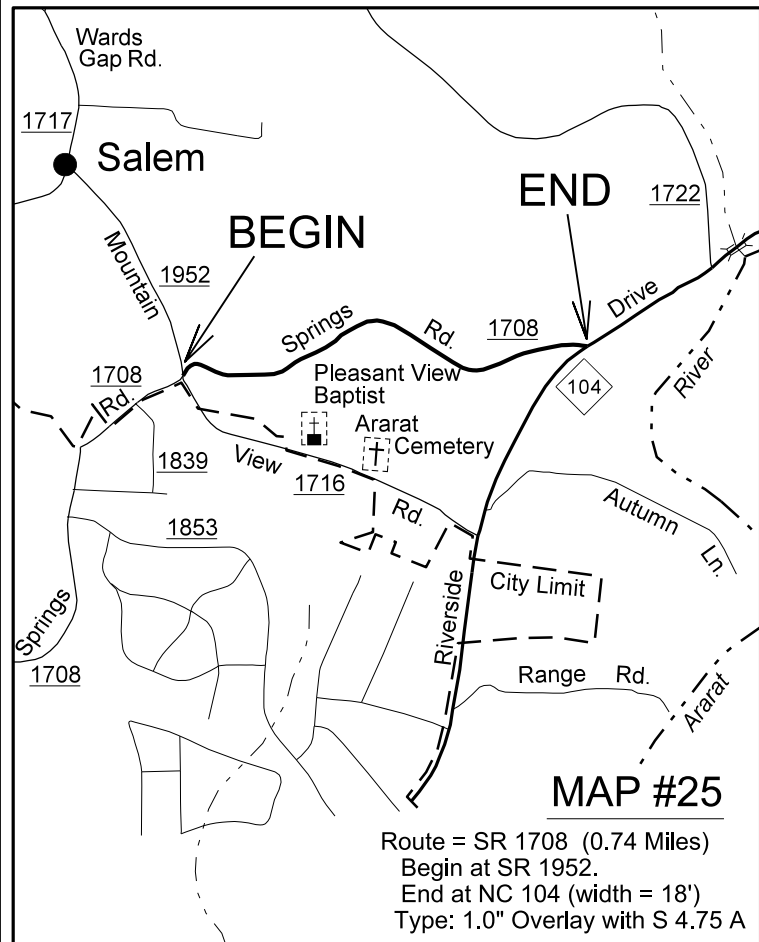
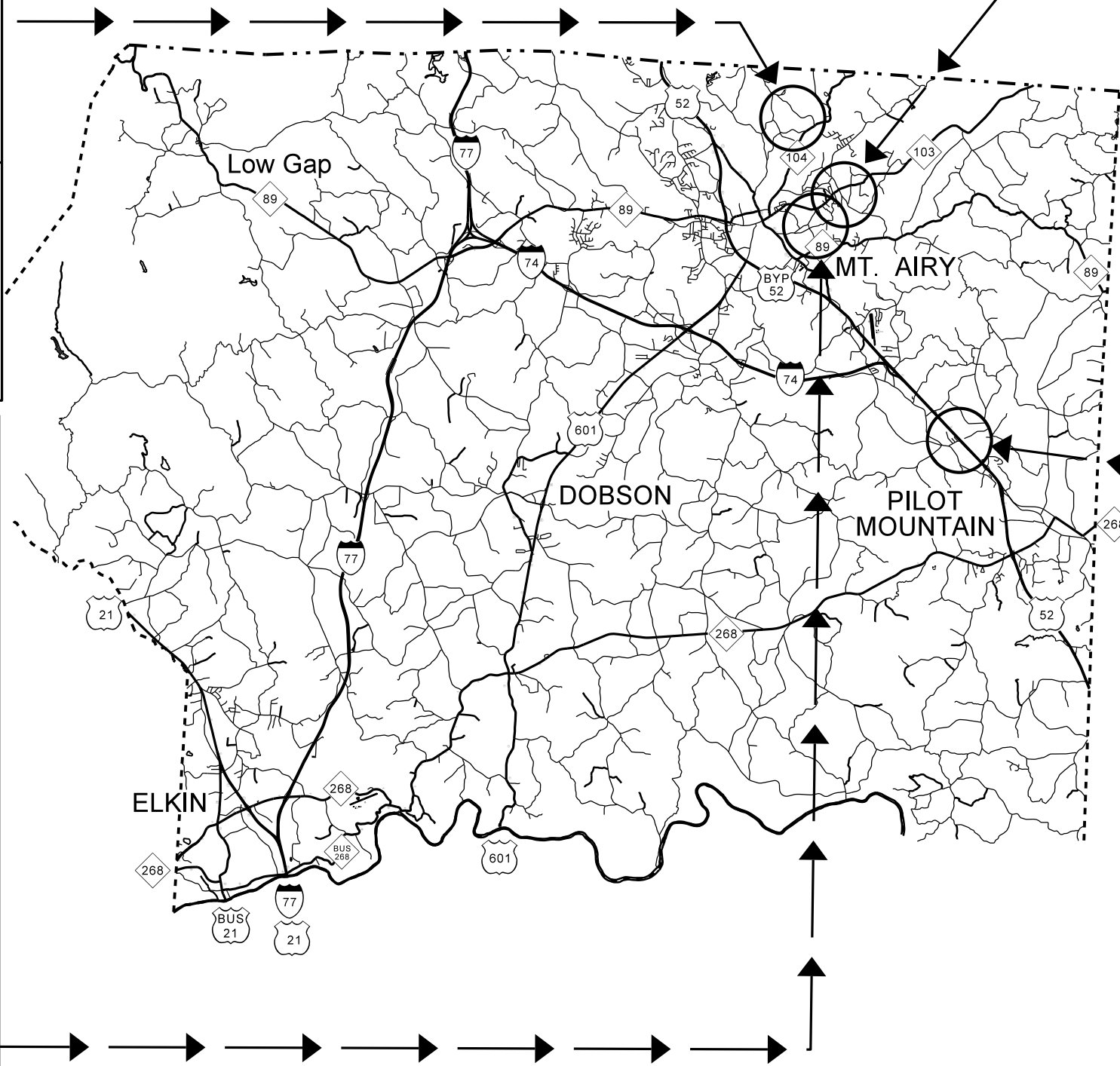


STATE OF NORTH CAROLINA  
DIVISION OF HIGHWAYS

**SURRY COUNTY**

2018

TYPE OF WORK: ASPHALT RESURFACING  
SECONDARY ROUTES

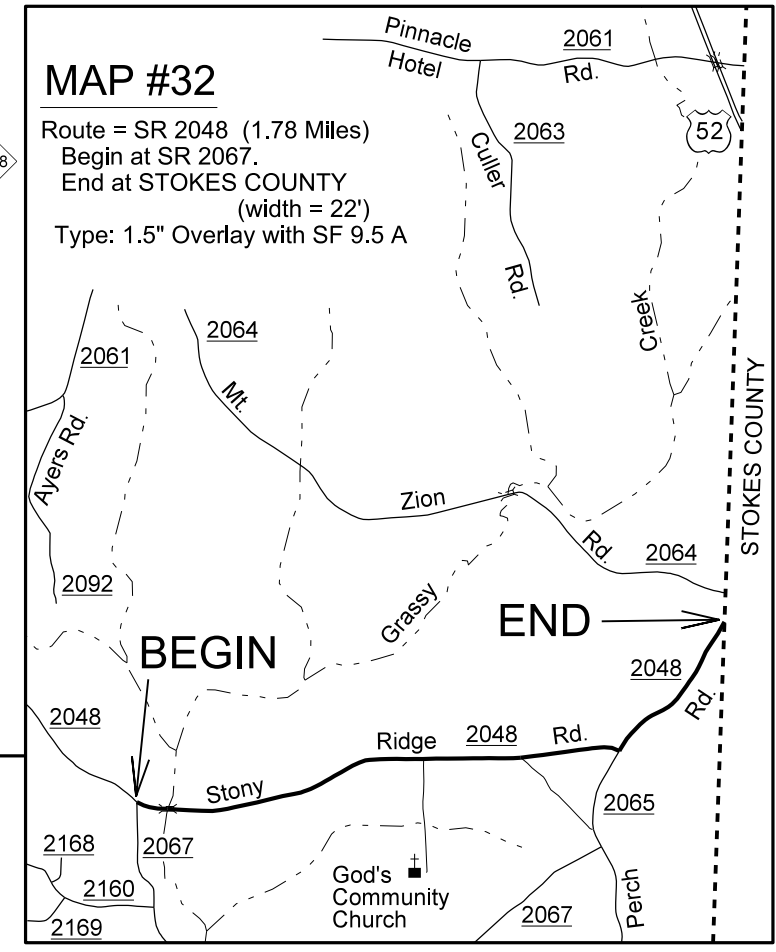
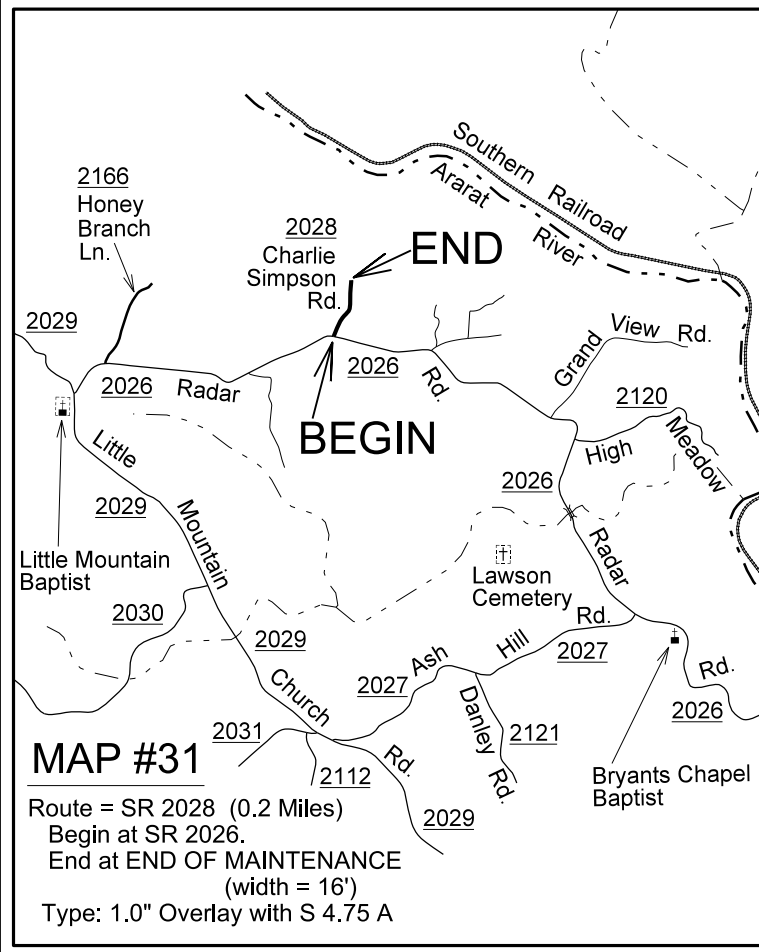
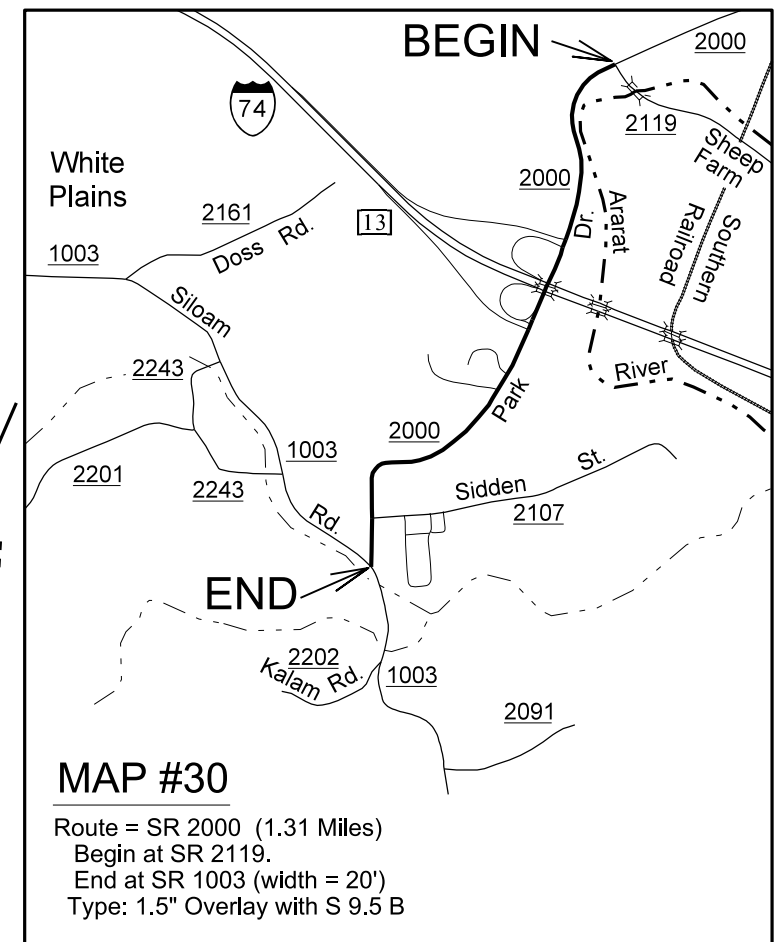
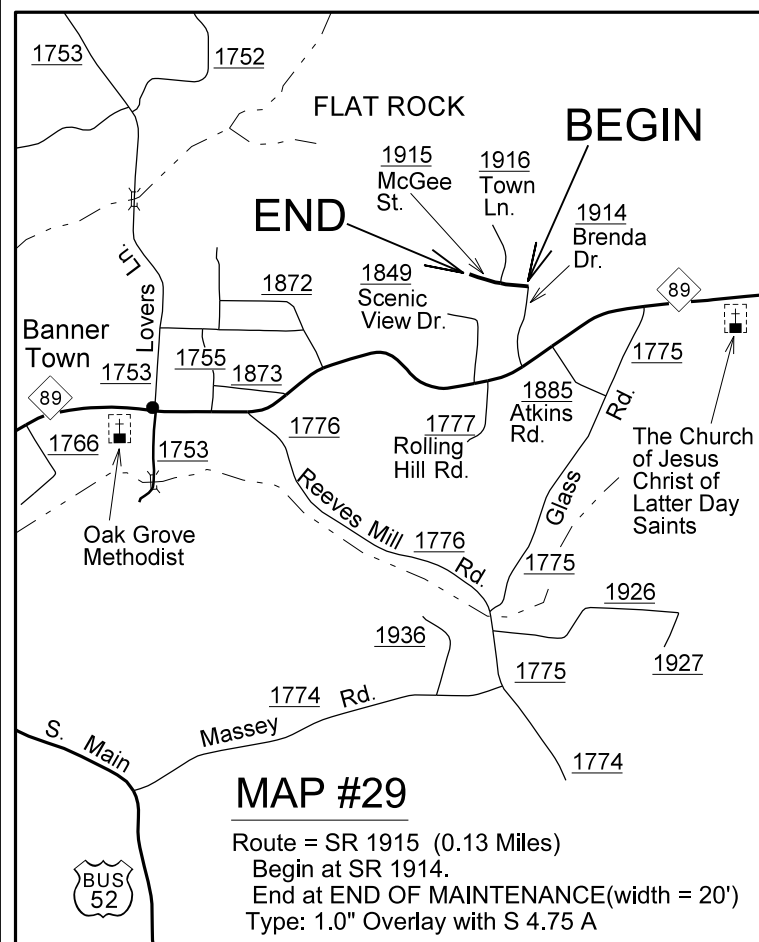
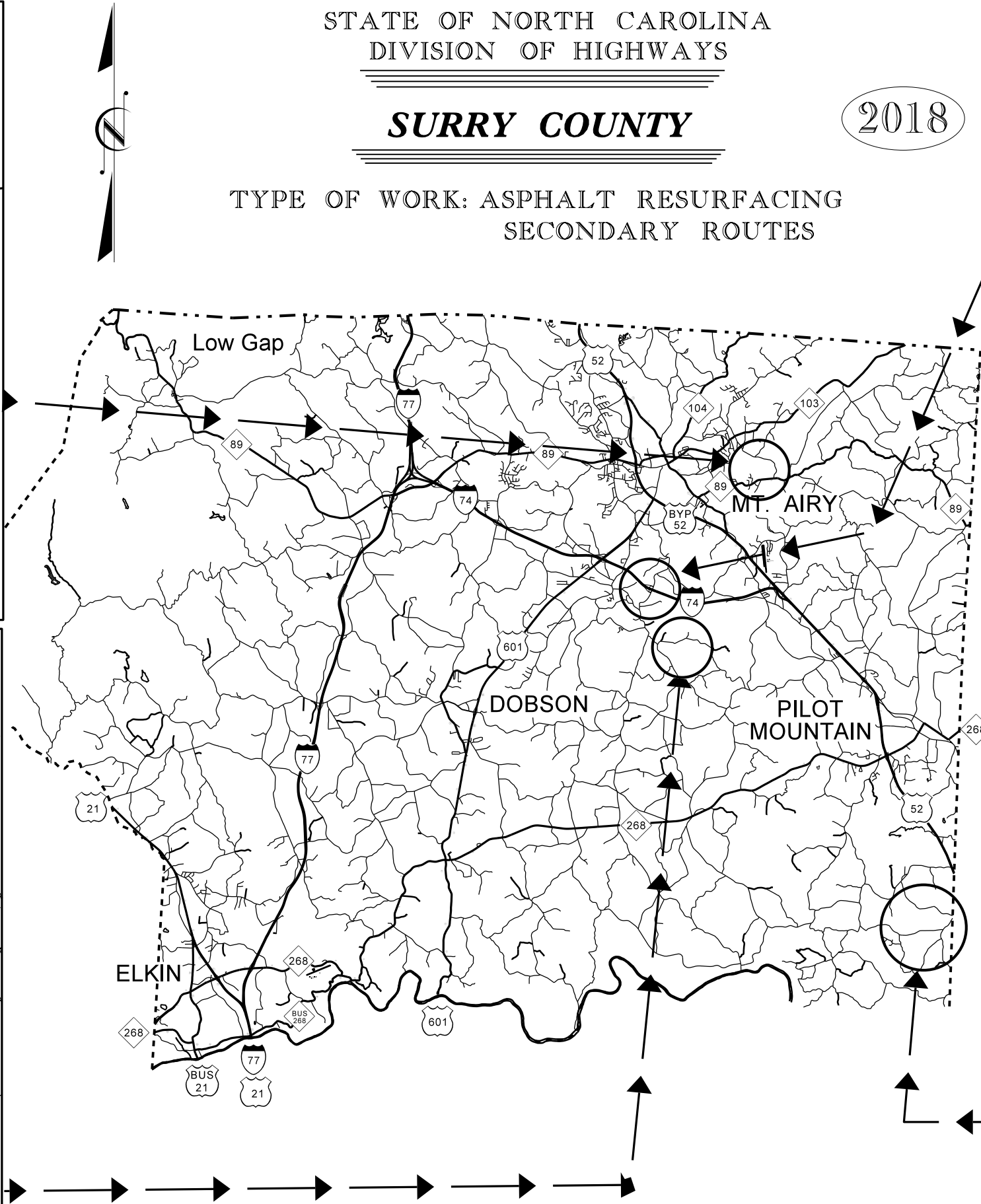


STATE OF NORTH CAROLINA  
DIVISION OF HIGHWAYS

**SURRY COUNTY**

2018

TYPE OF WORK: ASPHALT RESURFACING  
SECONDARY ROUTES

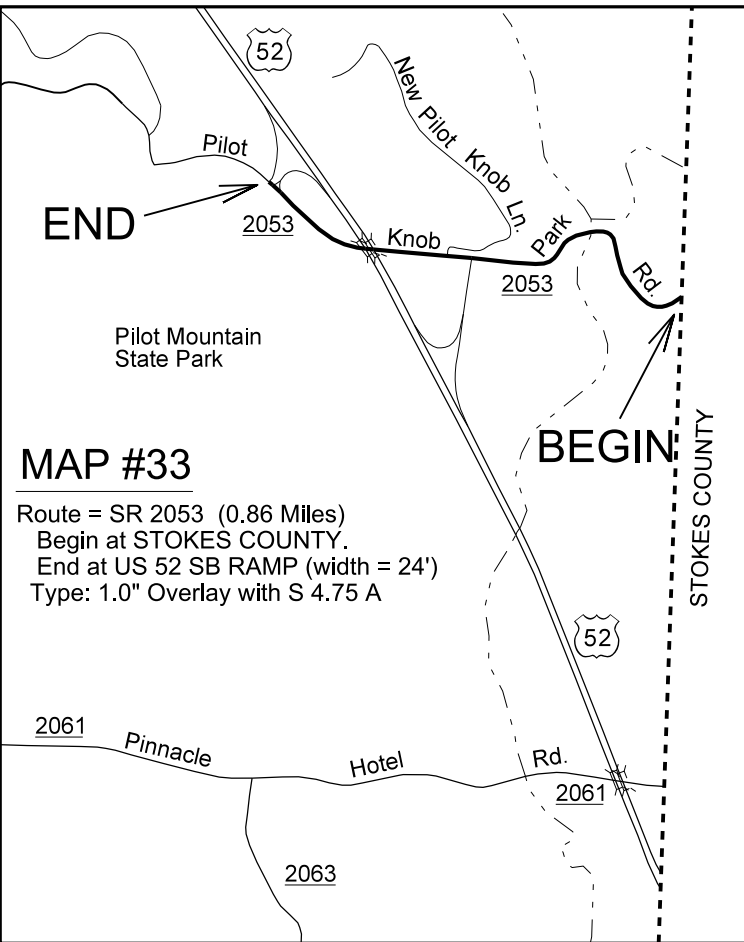
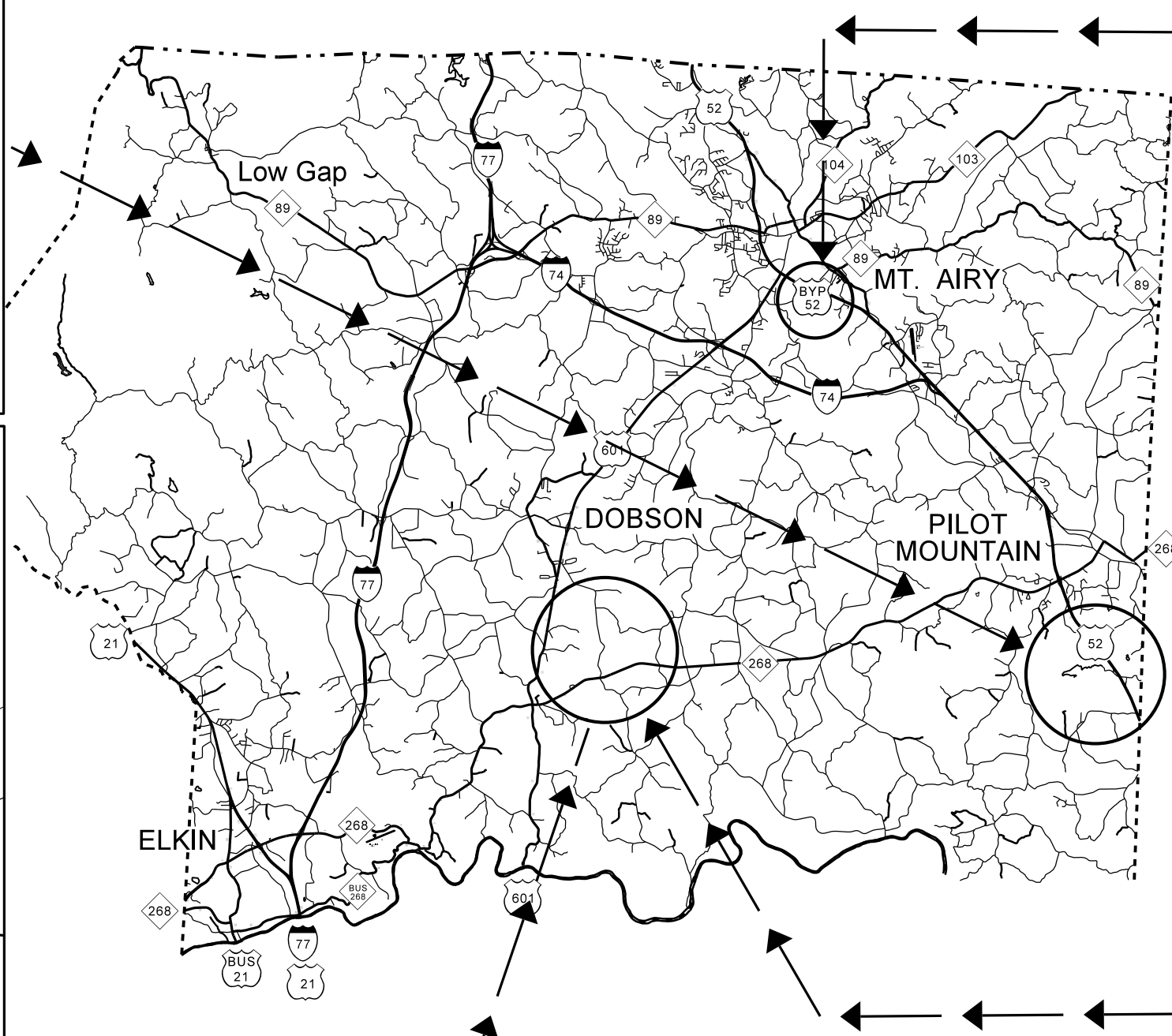


STATE OF NORTH CAROLINA  
DIVISION OF HIGHWAYS

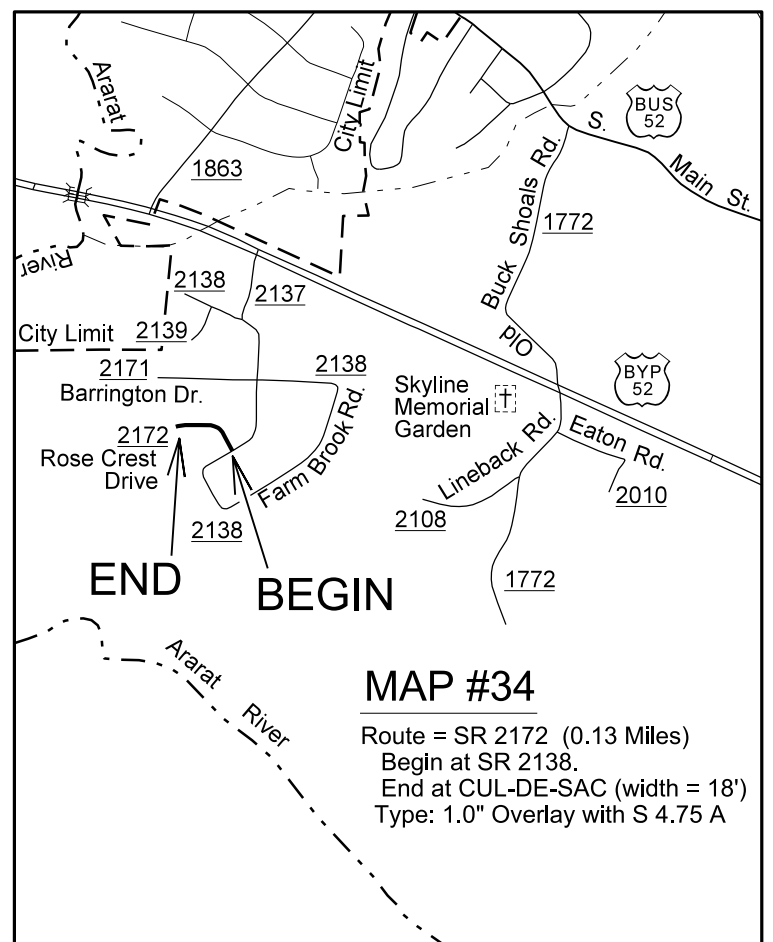
**SURRY COUNTY**

2018

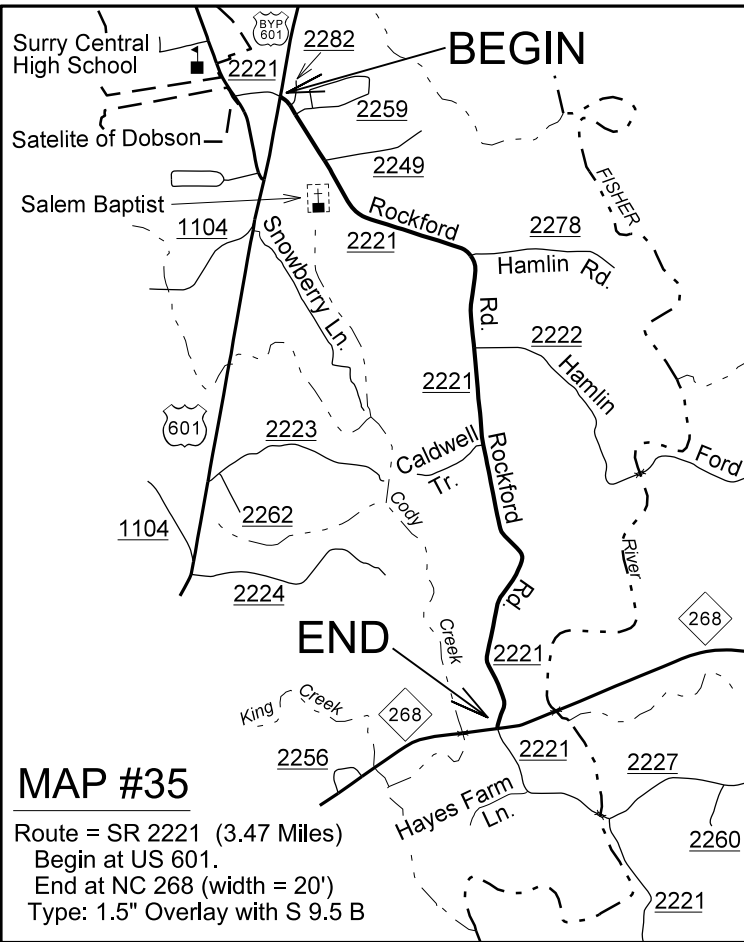
TYPE OF WORK: ASPHALT RESURFACING  
SECONDARY ROUTES



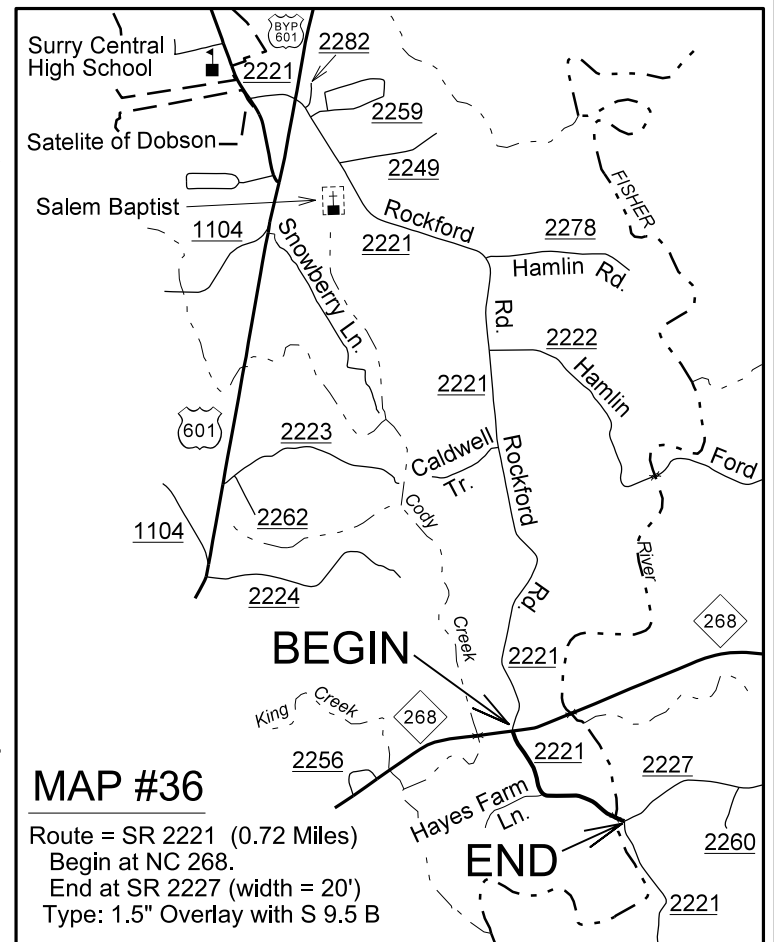
**MAP #33**  
Route = SR 2053 (0.86 Miles)  
Begin at STOKES COUNTY.  
End at US 52 SB RAMP (width = 24')  
Type: 1.0" Overlay with S 4.75 A



**MAP #34**  
Route = SR 2172 (0.13 Miles)  
Begin at SR 2138.  
End at CUL-DE-SAC (width = 18')  
Type: 1.0" Overlay with S 4.75 A



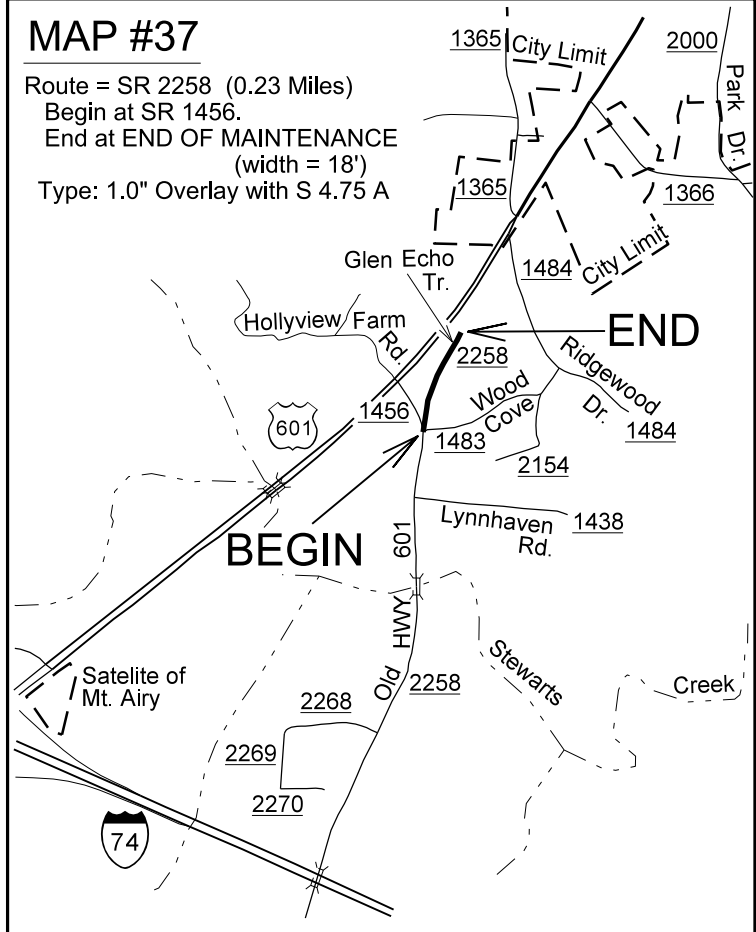
**MAP #35**  
Route = SR 2221 (3.47 Miles)  
Begin at US 601.  
End at NC 268 (width = 20')  
Type: 1.5" Overlay with S 9.5 B



**MAP #36**  
Route = SR 2221 (0.72 Miles)  
Begin at NC 268.  
End at SR 2227 (width = 20')  
Type: 1.5" Overlay with S 9.5 B

**MAP #37**

Route = SR 2258 (0.23 Miles)  
Begin at SR 1456.  
End at END OF MAINTENANCE  
(width = 18')  
Type: 1.0" Overlay with S 4.75 A

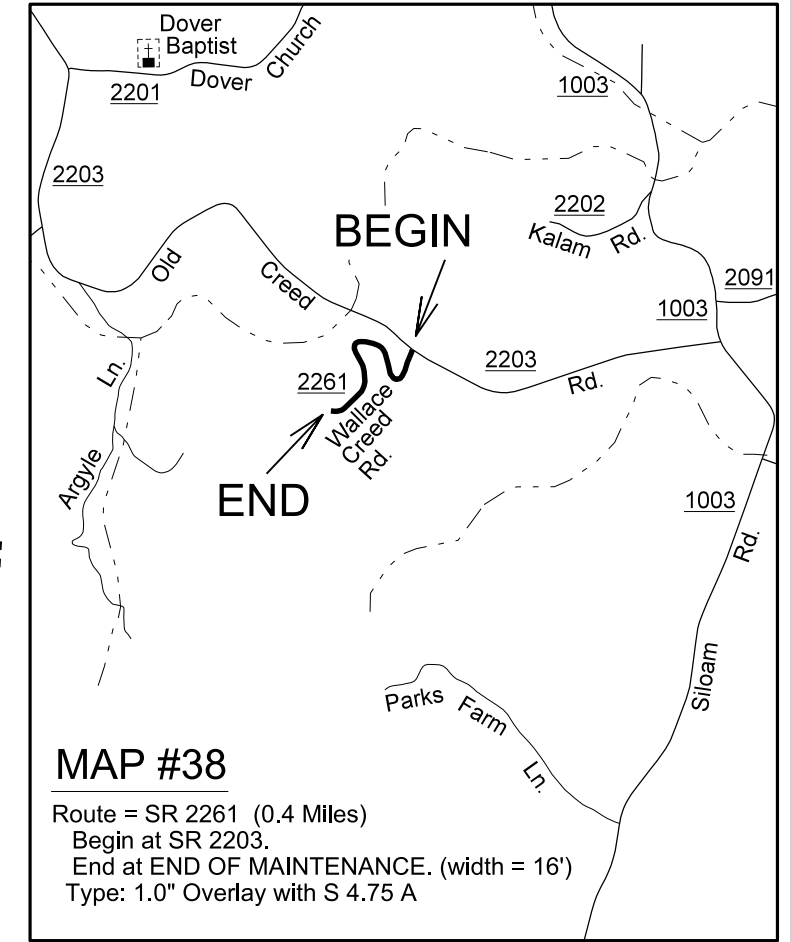
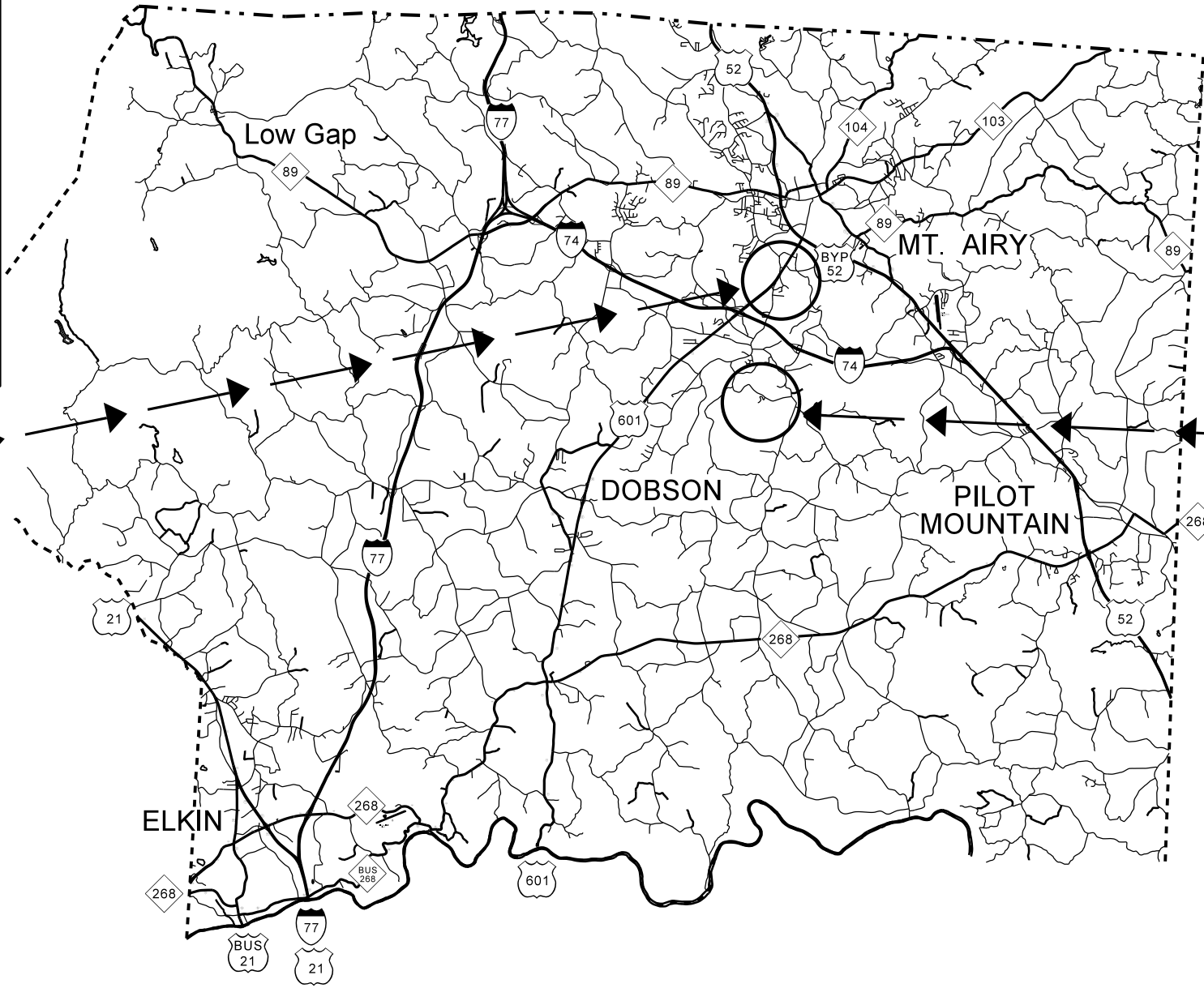


STATE OF NORTH CAROLINA  
DIVISION OF HIGHWAYS

**SURRY COUNTY**

2018

TYPE OF WORK: ASPHALT RESURFACING  
SECONDARY ROUTES



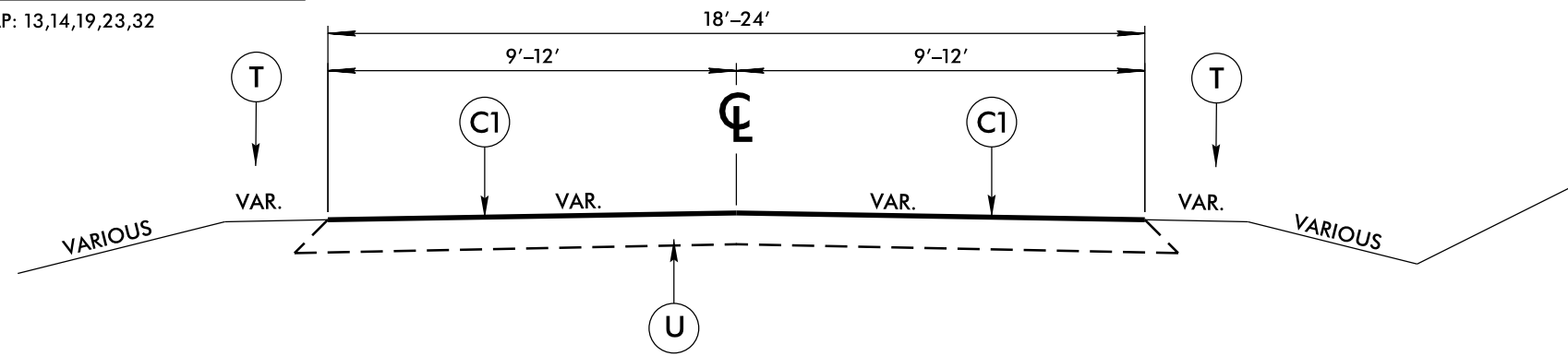
**MAP #38**

Route = SR 2261 (0.4 Miles)  
Begin at SR 2203.  
End at END OF MAINTENANCE. (width = 16')  
Type: 1.0" Overlay with S 4.75 A



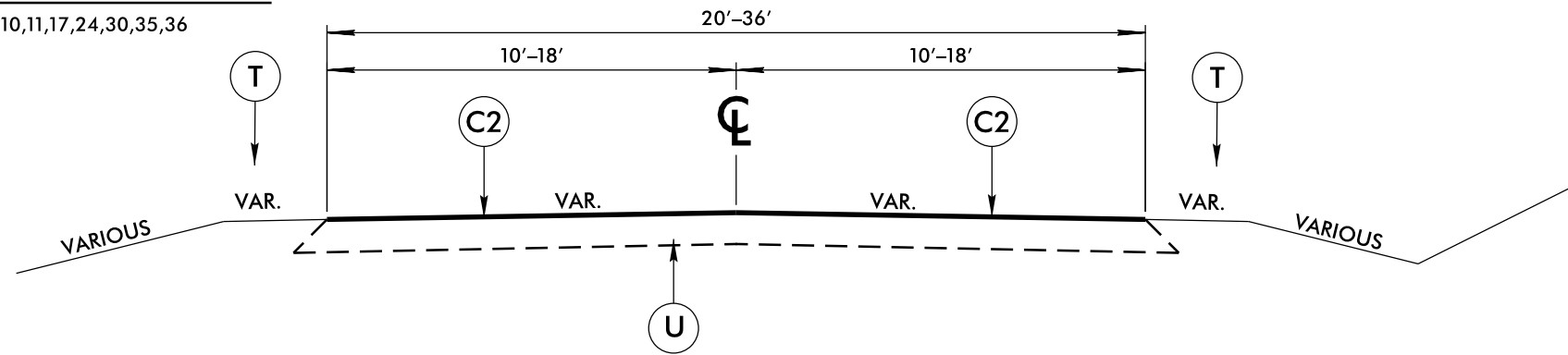
**TYPICAL SECTION NO. 4**

REFER TO MAP: 13,14,19,23,32



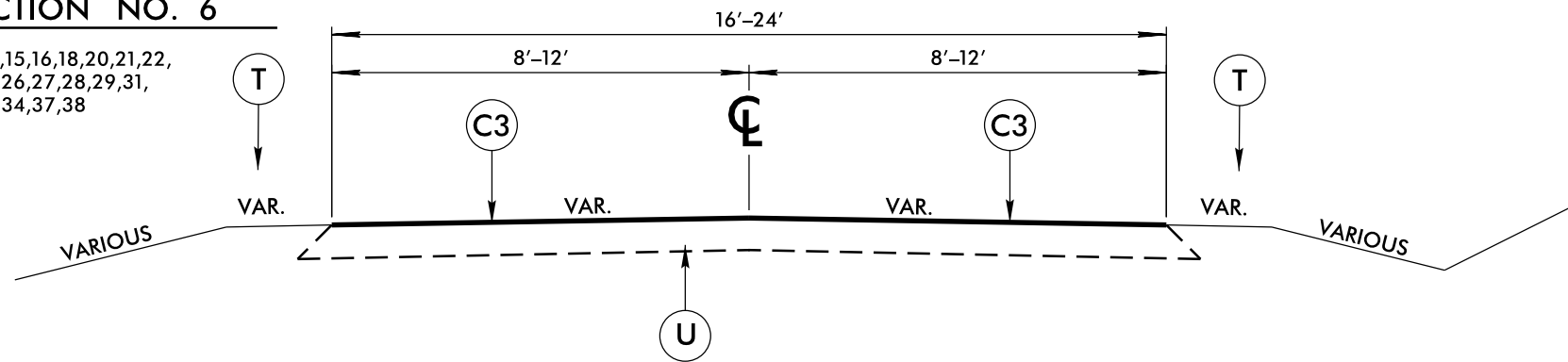
**TYPICAL SECTION NO. 5**

REFER TO MAPS: 10,11,17,24,30,35,36



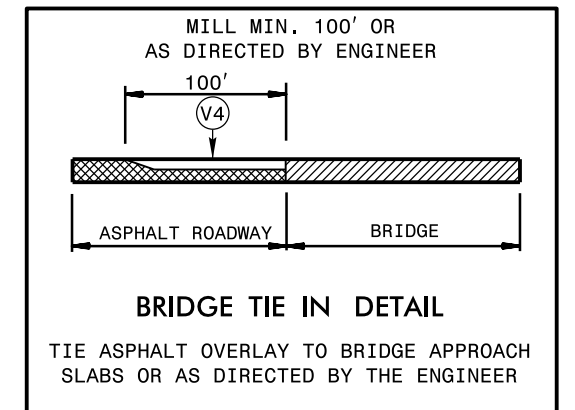
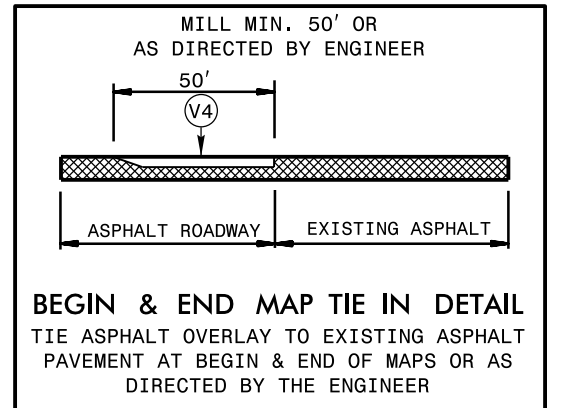
**TYPICAL SECTION NO. 6**

REFER TO MAPS: 12,15,16,18,20,21,22, 25,26,27,28,29,31, 33,34,37,38



**PAVEMENT SCHEDULE**

C1	PROP. APPROX. 1-1/2" ASPHALT CONCRETE SURFACE COURSE, TYPE SF9.5A AT AN AVERAGE RATE OF 165 LBS. PER SQ. YD.
C2	PROP. APPROX. 1-1/2" ASPHALT CONCRETE SURFACE COURSE, TYPE S9.5B AT AN AVERAGE RATE OF 168 LBS. PER SQ. YD.
C3	PROP. APPROX. 1" ASPHALT CONCRETE SURFACE COURSE, TYPE S4.75A AT AN AVERAGE RATE OF 100 LBS. PER SQ. YD.
C4	PROP. APPROX. 1-1/2" ASPHALT CONCRETE SURFACE COURSE, TYPE S9.5C AT AN AVERAGE RATE OF 168 LBS. PER SQ. YD.
T	SHOULDER RECONSTRUCTION
U	EXISTING PAVEMENT
V4	MILL AT DEPTH OF 1-1/2"

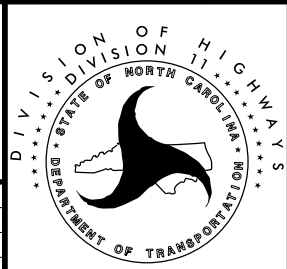


**SURRY COUNTY  
2018 PRIMARY &  
SECONDARY ROADS  
ASPHALT RESURFACING**

DIVISION II, DISTRICT I

REVISIONS	INIT.	DATE

**N.C. DEPARTMENT of TRANSPORTATION  
DIVISION of HIGHWAYS  
DIVISION ELEVEN**



SCALE: N/A DATE: 01/2017

PREPARED BY: S.B. DARNELL

REVIEWED BY: J.D. WOOD

REVIEWED BY:

PROJECT NO.	SHEET NO.	TOTAL NO.
2018CPT.11.07.20861		

## SUMMARY OF QUANTITIES

PROJECT NO	COUNTY	MAP NO	ROUTE	DESCRIPTION	TYP NO	LANES	LANE TYPE	LENGTH M	WIDTH FT	BORROW CY	INCIDENTAL STONE BASE TONS	SHOULDER RECONSTRUCTION SM	1½" MILLING SY	0" TO 1.5" MILLING SY	INCIDENTAL MILLING SY	SURFACE COURSE, S9.5B TONS	SURFACE COURSE, SF9.5A TONS	SURFACE COURSE, S4.75A TONS	ASPHALT BINDER FOR PLANT MX TONS	PATCHING EXISTING PAVEMENT TONS	ADJ. OF MANHOLES EA	ADJ. OF METER OR VALVE BOX EA	SEED & MULCHING AC
2018CPT.11.07.20861	Surry	10	SR 1001	FROM SR 1521 TO SR 1185	5	2	2WU	3.57	22	536	36	7.14		480	244	4,507			270	271			1.29
2018CPT.11.07.20861	Surry	11	SR 1003	FROM SR 2081 TO SR 2085	5	2	2WU	2.21	24	332	22	4.42			267	2,702			162	171			0.80
2018CPT.11.07.20861	Surry	12	SR 1104	FROM US 601 TO SR 1103	6	2	2WU	1.13	18	85		2.26					679	46	66				0.41
2018CPT.11.07.20861	Surry	13	SR 1139	FROM NC 268 BUS. TO SR NC 268	4	2	2WU	1.13	22	169	17	2.26			244		1,260	84	80				0.41
2018CPT.11.07.20861	Surry	14	SR 1365	FROM US 601 TO SR 1394	4	2	2WU	0.36	18	54	5	0.72			200		394	26	23				0.13
2018CPT.11.07.20861	Surry	15	SR 1539	FROM NORTHERN CUL-DE-SAC TO SOUTHERN CUL-DE-SAC	6	2	2WU	0.22	22	17		0.44					225	15	16				0.08
2018CPT.11.07.20861	Surry	16	SR 1630	FROM SR 1394 TO SR 1624	6	2	2WU	0.2	16	15		0.40					99	7	10				0.07
2018CPT.11.07.20861	Surry	17	SR 1637	FROM SR 1648 TO SR US 52	5	2	2WU	0.04	36	6	1	0.08			400	71		4	5				0.01
2018CPT.11.07.20861	Surry	18	SR 1639	FROM NC 89 TO EOM	6	2	2WU	0.35	20	26		0.70					236	16	23				0.13
2018CPT.11.07.20861	Surry	19	SR 1648	FROM SR 1637 TO SR 2406	4	2	2WU	0.99	18	149	15	1.98			200		943	63	58	1			0.36
2018CPT.11.07.20861	Surry	20	SR 1654	FROM SR 1652 TO SR 2406	6	2	2WU	0.18	20	14		0.36					111	8	12				0.06
2018CPT.11.07.20861	Surry	21	SR 1690	FROM SR 1627 TO SR 1692	6	2	2WU	0.2	18	15		0.40					111	8	12				0.07
2018CPT.11.07.20861	Surry	22	SR 1698	FROM SR 1697 TO EOM	6	2	2WU	0.06	22	5		0.12					41	3	4				0.02
2018CPT.11.07.20861	Surry	23	SR 1701	FROM SR 1708 TO SR 1717	4	2	2WU	0.71	36						400		1,241	83	82	9	10		
2018CPT.11.07.20861	Surry	24	SR 1708	FROM US 52 BUS TO SR 1701	5	2	2WU	0.96	40						444	1,898		114	124	12	12		
2018CPT.11.07.20861	Surry	25	SR 1708	FROM SR 1952 TO NC 104	6	2	2WU	0.74	18	56	11	1.48					412	28	43				

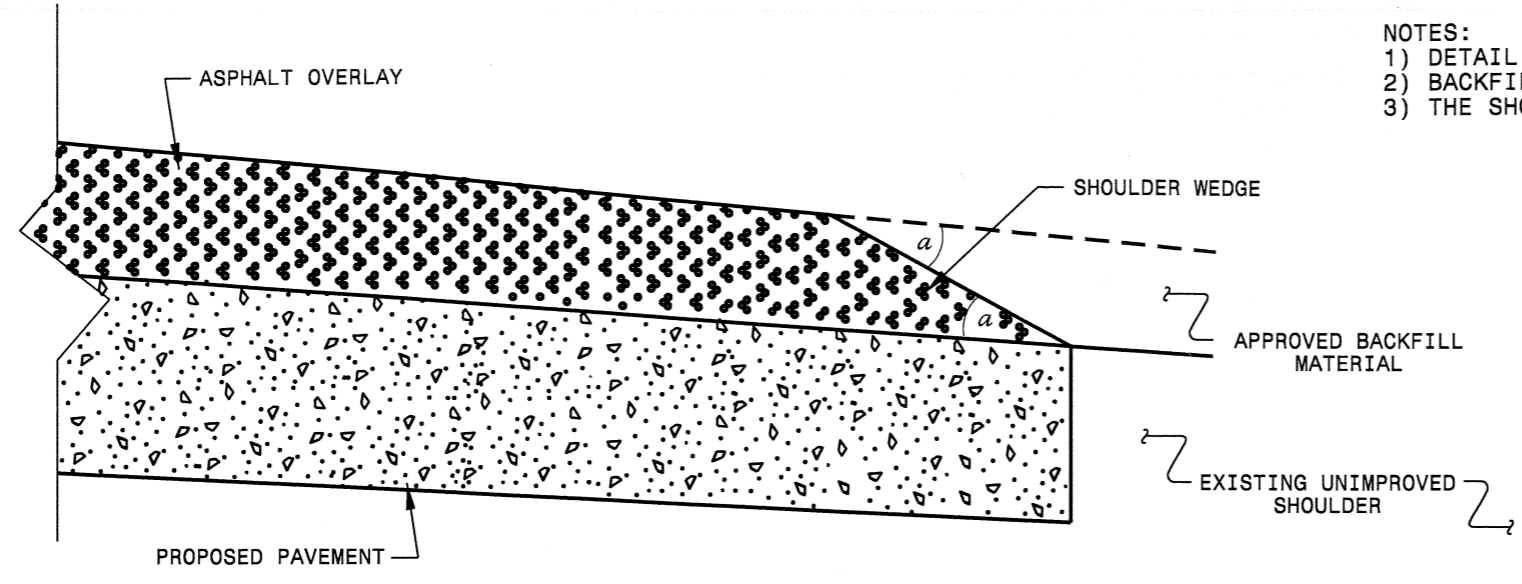
PROJECT NO.	SHEET NO.	TOTAL NO.
2018CPT.11.07.20861		

2018CPT.11.07.20861	Surry	26	SR 1751	FROM SR 1727 TO SR 1750	6	2	2WU	0.11	20	8		0.22					68	5	7		0.04		
2018CPT.11.07.20861	Surry	27	SR 1758	FROM SR 1759 TO SR 1753	6	2	2WU	0.9	18	68		1.80					501	34	52		0.32		
2018CPT.11.07.20861	Surry	28	SR 1880	FROM SR 2012 TO EOM	6	2	2WU	0.67	20	50		1.34					414	28	43		0.24		
2018CPT.11.07.20861	Surry	29	SR 1915	FROM SR 1914 TO EOM	6	2	2WU	0.13	20	10		0.26					80	5	8		0.05		
2018CPT.11.07.20861	Surry	30	SR 2000	FROM SR 2119 TO SR 1003	5	2	2WU	1.31	20	98	26	2.62	444	444	222	1,666		100	100		0.47		
2018CPT.11.07.20861	Surry	31	SR 2028	FROM SR 2026 TO EOM	6	2	2WU	0.2	16	15		0.40					99	7	10		0.07		
2018CPT.11.07.20861	Surry	32	SR 2048	FROM SR 2067 TO STOKES COUNTY LINE	4	2	2WU	1.78	22	134	36	3.56		122	244		1,956		131	126		0.64	
2018CPT.11.07.20861	Surry	33	SR 2053	FROM STOKES COUNTY LINE TO US 52 SB RAMP	6	2	2WU	0.86	24	65		1.72			267		688	47	67		0.31		
2018CPT.11.07.20861	Surry	34	SR 2172	FROM SR 2138 TO CUL-DE-SAC	6	2	2WU	0.13	18	10		0.26					122	8	8		0.05		
2018CPT.11.07.20861	Surry	35	SR 2221	FROM US 601 TO NC 268	5	2	2WU	3.47	20	521	69	6.94			222	3,541		212	224		1.25		
2018CPT.11.07.20861	Surry	36	SR 2221	FROM NC 268 TO SR 2227	5	2	2WU	0.72	20	108	14	1.44		111	222	734		44	46		0.26		
2018CPT.11.07.20861	Surry	37	SR 2258	FROM SR 1456 TO EOM	6	2	2WU	0.23	18								128	9	13		0.08		
2018CPT.11.07.20861	Surry	38	SR 2261	FROM SR 2203 TO EOM	6	2	2WU	0.4	16	30		0.80					218	15	21		0.14		
<b>TOTAL FOR PROJ NO. 2018CPT.11.07.20861</b>								<b>23.96</b>		<b>2,596</b>	<b>252</b>	<b>44.12</b>	<b>444</b>	<b>1,157</b>	<b>3,576</b>	<b>15,119</b>	<b>5,794</b>	<b>4,232</b>	<b>1,582</b>	<b>1,725</b>	<b>22</b>	<b>22</b>	<b>7.76</b>
<b>GRANDTOTAL</b>																							
								<b>23.96</b>		<b>2,596</b>	<b>252</b>	<b>44.12</b>	<b>444</b>	<b>1,157</b>	<b>3,576</b>	<b>15,119</b>	<b>5,794</b>	<b>4,232</b>	<b>1,582</b>	<b>1,725</b>	<b>22</b>	<b>22</b>	<b>7.76</b>

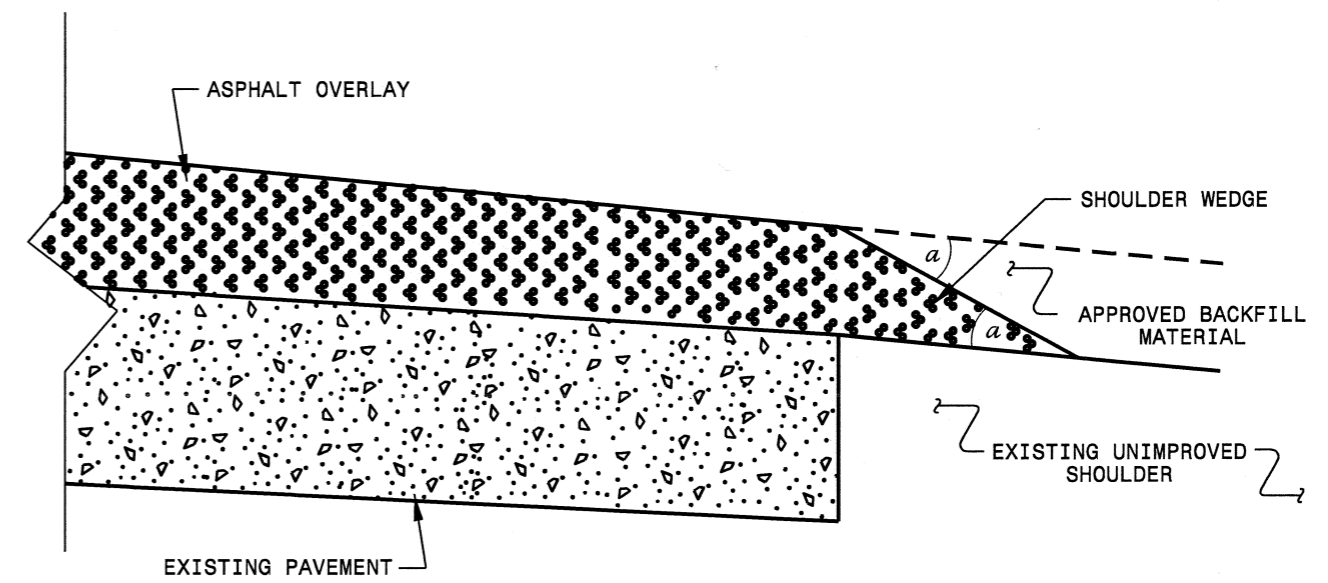


																	PROJECT NO.		SHEET NO.	TOTAL NO.		
																	2018CPT.11.07.20861					
2018CPT.11.07.20861	Surry	26	SR 1751	FROM SR 1727 TO SR 1750	6	2	2WU	0.11	20	72	1.00											
2018CPT.11.07.20861	Surry	27	SR 1758	FROM SR 1759 TO SR 1753	6	2	2WU	0.9	18	144	1.00	19,368	19,368									
2018CPT.11.07.20861	Surry	28	SR 1880	FROM SR 2012 TO EOM	6	2	2WU	0.67	20	48	1.00	14,418	14,418									
2018CPT.11.07.20861	Surry	29	SR 1915	FROM SR 1914 TO EOM	6	2	2WU	0.13	20	24	1.00											
2018CPT.11.07.20861	Surry	30	SR 2000	FROM SR 2119 TO SR 1003	5	2	2WU	1.31	20	96	1.00	28,191	28,191				10	12				
2018CPT.11.07.20861	Surry	31	SR 2028	FROM SR 2026 TO EOM	6	2	2WU	0.2	16	24	1.00											
2018CPT.11.07.20861	Surry	32	SR 2048	FROM SR 2067 TO STOKES COUNTY LINE	4	2	2WU	1.78	22	72	1.00	38,306	38,306									
2018CPT.11.07.20861	Surry	33	SR 2053	FROM STOKES COUNTY LINE TO US 52 SB RAMP	6	2	2WU	0.86	24	48	1.00	18,507	18,507									
2018CPT.11.07.20861	Surry	34	SR 2172	FROM SR 2138 TO CUL-DE-SAC	6	2	2WU	0.13	18	24	1.00											
2018CPT.11.07.20861	Surry	35	SR 2221	FROM US 601 TO NC 268	5	2	2WU	3.47	20	72	1.00	74,674	74,674									
2018CPT.11.07.20861	Surry	36	SR 2221	FROM NC 268 TO SR 2227	5	2	2WU	0.72	20	96	1.00											
2018CPT.11.07.20861	Surry	37	SR 2258	FROM SR 1456 TO EOM	6	2	2WU	0.23	18	24	1.00		4,950									
2018CPT.11.07.20861	Surry	38	SR 2261	FROM SR 2203 TO EOM	6	2	2WU	0.4	16	48	1.00											
<b>TOTAL FOR PROJ NO. 2018CPT.11.07.20861</b>								<b>23.96</b>		<b>2,222</b>	<b>29</b>	<b>417,627</b>	<b>459,229</b>	<b>200</b>	<b>838</b>	<b>8</b>	<b>48</b>	<b>16</b>	<b>14</b>	<b>2</b>	<b>498</b>	
												<b>876,856</b>					<b>80</b>					
<b>GRANDTOTAL</b>								<b>23.96</b>		<b>2,222</b>	<b>29</b>	<b>417,627</b>	<b>459,229</b>	<b>200</b>	<b>838</b>	<b>8</b>	<b>48</b>	<b>16</b>	<b>14</b>	<b>2</b>	<b>498</b>	
												<b>876,856</b>					<b>80</b>					

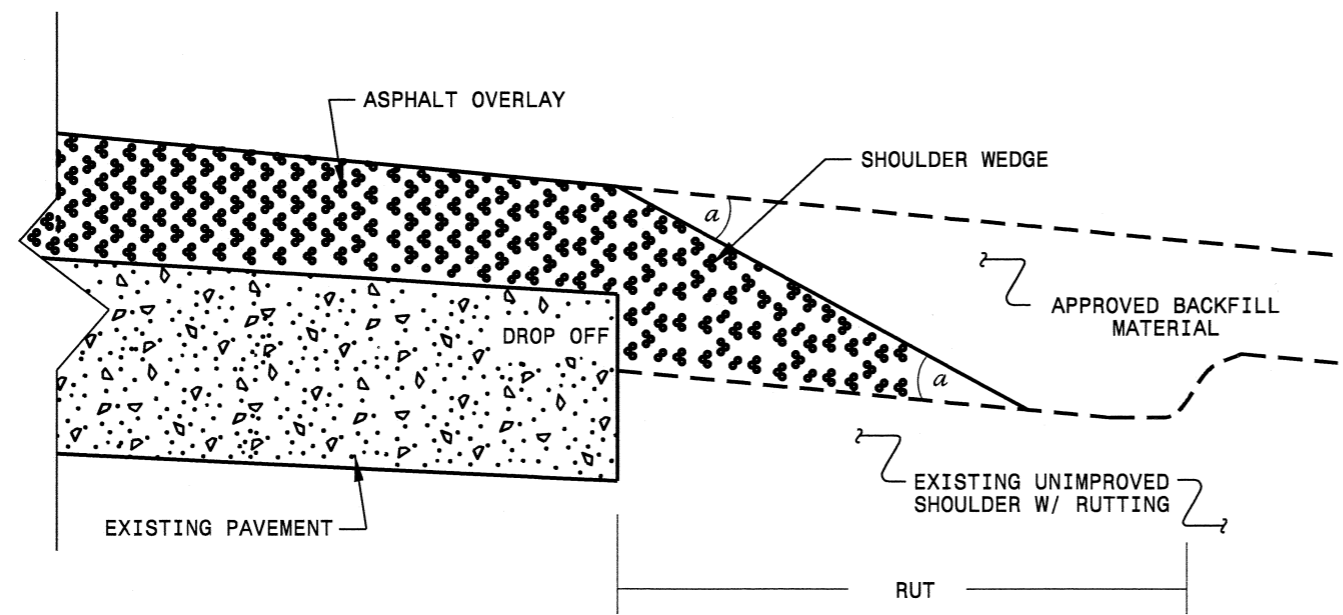
- NOTES:  
 1) DETAIL DOES NOT APPLY TO OGAFB AND ULTRA-THIN BONDED WEARING COURSE.  
 2) BACKFILL SHOULDER WITH APPROVED MATERIAL.  
 3) THE SHOULDER WEDGE DEVICE MAY BE DISENGAGED AT PAVED DRIVEWAYS AND SIDE STREETS.



**SHOULDER WEDGE DETAIL**  
 (Resurfacing Projects w/ Widening or  
 with Existing Paved Shoulder having no dropoffs)



**SHOULDER WEDGE DETAIL**  
 (Resurfacing Projects w/ NO Widening)



**SHOULDER WEDGE DETAIL**  
 (Resurfacing Adjacent to  
 Rutted Shoulder)

- SHOULDER WEDGE ANGLE = 30°

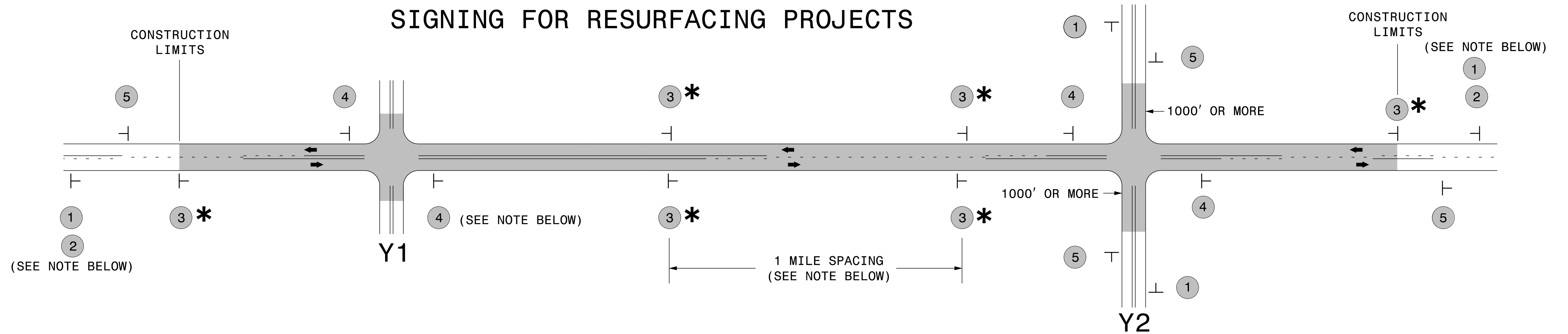
CONTRACT STANDARDS  
 AND DEVELOPMENT UNIT  
 Office 919-707-6950 FAX 919-250-4119

**SHOULDER WEDGE  
 DETAILS**

ORIGINAL BY: T.SPELL DATE: 7-19-11  
 MODIFIED BY: DATE: 10/18/12  
 CHECKED BY: DATE:  
 FILE SPEC.: s:\user\details\stand\shoulderwedgedetail.dgn

SYSTEMS CONSULTANTS  
 CONSULTANTS

# SIGNING FOR RESURFACING PROJECTS



LEGEND	
	STATIONARY SIGN
←	DIRECTION OF TRAFFIC FLOW

## MAINLINE (-L-) SIGNING

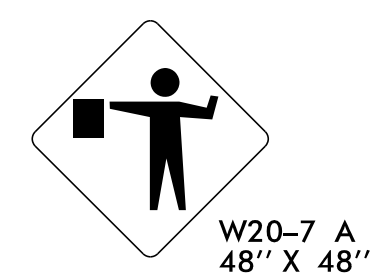
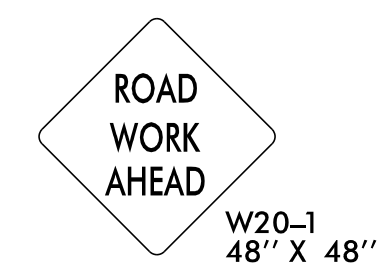
## -Y- LINE SIGNING

<b>SIGNING NOTES AND PLACEMENT PER DIRECTION</b>	1	 <small>W20-1 48" X 48"</small>	PLACE 1000' PRIOR TO BEGINNING OF CONSTRUCTION LIMITS. ONLY USED ON -Y- LINES IF RESURFACING LIMITS EXTEND 1000' ALONG -Y- LINE.		
	2	 <small>W7-3aP 24" X 18"</small>	#2 SIGN ONLY USED WHEN RESURFACING LIMITS ARE 2 OR MORE MILES IN LENGTH. ROUND UP TO NEXT WHOLE NUMBER. (NO FRACTIONAL OR DECIMAL NUMBERS)		
	3 *	 <small>SP 13107 48" X 48"</small>	PLACE INITIALLY AT THE CONSTRUCTION LIMITS AND SPACED 1 MILE APART THEREAFTER. IF NO -Y- LINES EXIST, PLACE 2ND SET 1/2 MILE FROM THE CONSTRUCTION LIMITS AND THEN SPACE 1 MILE THEREAFTER.		
	4	 <small>SP 13106 48" X 48"</small>	THESE ARE FOR -Y- LINES THAT ARE "THROUGH" ROADWAYS. DEAD END AND SUBDIVISION ROADS ARE NOT "THROUGH" ROADWAYS. INSTALL 500' +/- FROM EACH -Y- LINE APPROACH AS SHOWN ABOVE. FOR MULTIPLE -Y- LINES THAT ARE SEPARATED BY 0.25 MILES OR LESS, TREAT AS A SINGLE UNIT AND INSTALL WITHIN 500' OF EACH APPROACH. A MAXIMUM OF 2 SIGN SETS PER MILE. DO NOT INSTALL WHEN -Y- LINES ARE WITHIN 0.5 MILES FROM "END ROAD WORK" SIGN.		
	5	 <small>G20-2 A 48" X 24"</small>	PLACE 500' FOLLOWING THE END OF CONSTRUCTION LIMITS.		

**NO REQUIRED STATIONARY SIGNING FOR THE FOLLOWING -Y- LINE CONDITIONS:**

- 1) LESS THAN 1000' OF RESURFACING ALONG -Y- LINE
- 2) SUBDIVISION ROADS
- 3) DEAD END ROADS

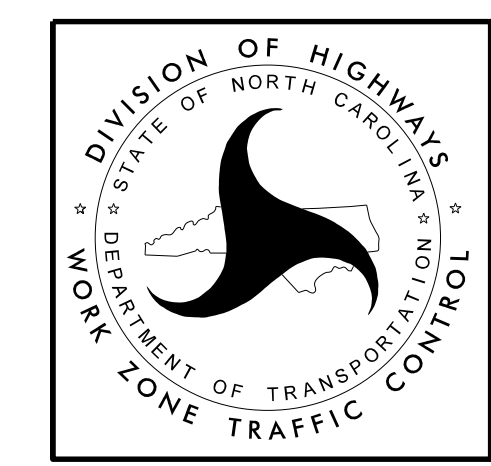
WHEN PAVING/CONSTRUCTION ACTIVITIES PROCEED ACROSS AN UNSIGNED -Y- LINE, ADVANCE WARNING PORTABLE SIGNS SHALL BE USED ALONG THE -Y- LINE AS SHOWN BELOW. REMOVE UPON COMPLETION OF WORK.



PLACED 500' IN ADVANCE OF FLAGGER. PLACED 250' IN ADVANCE OF FLAGGER.

### \* SIGNING FOR ASPHALT SURFACE TREATMENTS (ONLY)

SUBSTITUTE LOW/SOFT SHOULDER SIGNS BY ALTERNATING THE FOLLOWING TWO SIGNS:  
 STARTING WITH "UNMARKED PAVEMENT AHEAD" (SP 06026) FOLLOWED BY "LOOSE GRAVEL" (W8-7).



**RESURFACING  
ADVANCE WARNING SIGNS  
FOR  
RURAL AND SUBURBAN  
2 LANE ROADWAYS**

6/3/2014 S:\T\U\WZTC\Apps\WorkZoneGeneral\ExternalWebPage\DesRes\Resurfacing\Resurfacing\_AdvWarn\_2Ln.dgn User:rmgarr